



D Y N A F A M I L Y

SM32XX

USB Flash Disk Utility

User's Manual

Revision: 1.1

Updated: April 11, 2011

Notice

Silicon Motion, Inc. has made its best efforts to ensure that the information contained in this document is accurate and reliable. However, the information is subject to change without notice. No responsibility is assumed by Silicon Motion, Inc. for the use of this information, nor for infringements of patents or other rights of third parties.

**Copyright
Notice**

Copyright 2010, Silicon Motion, Inc. All rights reserved. No part of this publication may be reproduced, photocopied, or transmitted in any form, without the prior written consent of Silicon Motion, Inc. Silicon Motion, Inc. reserves the right to make changes to the product specification without reservation and without notice to our users.

Revision No.	Date	Note
1.0	June. 2010	Formal Release

All rights strictly reserved. No portion of this paper may be reproduced, copied, or translated into any other form without permission from Silicon Motion, Inc.

1. Outline

1.1 System Requirements

- Windows 98/ME/2000/XP/Vista/Windows 7

1.2 Multilingual Support

- Simplified Chinese 、 Traditional Chinese 、 and English

1.3 Partition Management

- UFD Utility can be used to partition UFD into 2 kinds of partitioning types. One is Public Area, the other is Security Area.
- Public Area - No security restrict to default setting. User can use entire memory area as public area
- Security Area - Data in Security Area is protected by password.
- Public Area + Security Area - UFD can be partitioned into 2 areas, Public area and Security area. All data stored in Security area is protected by password. However, the Public area has no restrictions in access.

1.4 Note

- Please be aware that some utility functions will format the UFD after executing the UFDUtility.exe. Please backup all data in the UFD before executing the program.

2. Icon Descriptions of the UFD Utility

The descriptions for each icon after plug in UFD and execute uDiskToolBar.exe were list below.



(A) (B) (C) (D) (E)

(A) Partition Manager

- The icon can partition UFD into “Public Area” only or “Public area + Security area”. It can modify disk label and password for security area.
Noticed: When you partition UFD into Public Area+ Security Area, the Public Area need reserve 5MB space that save uDiskToolBar.exe file.

(B) Security Area Manager

- The icon can Login security area after input correct password and logout after data access for protection.

(C) Auto Run Manager

- Create virtual CDROM partition with auto-run feature embedded on top of “Partition Manager” made 1 or 2 partition areas. This tool also supports ISO image file making and one single “Removable Disk” default setting call back function.

(D) Boot Disk Manager

- The icon can make boot disk after put Dos boot file in it.

(E) PC locked Manager (Windows XP only)

- This icon can let Keyboard and Mouse lock up. It can avoid other user use this computer.

3. UFD Utility Operation manual

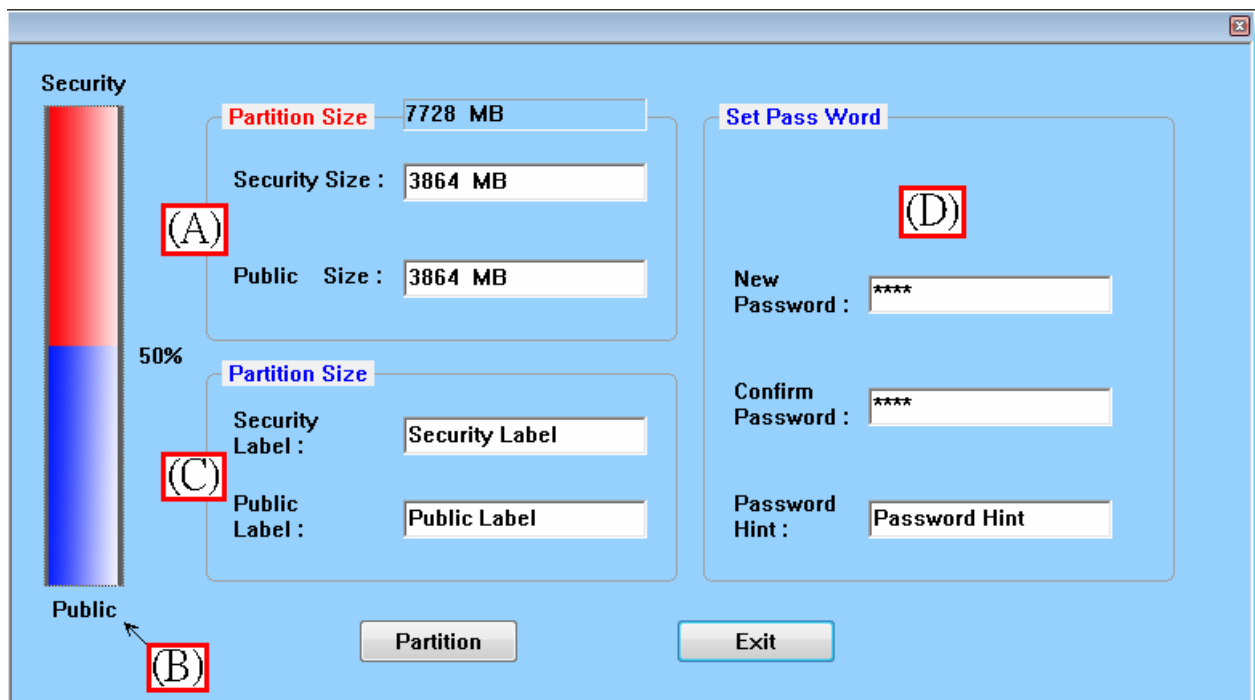
3.1 Introduction of Partition Manager

- Click “Partition Manager” on the UFD Utility bar.



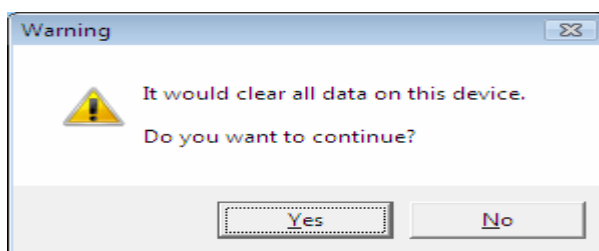
(A) (B) (C) (D) (E)

- “Partition Manager” window will pop up right after click as below.

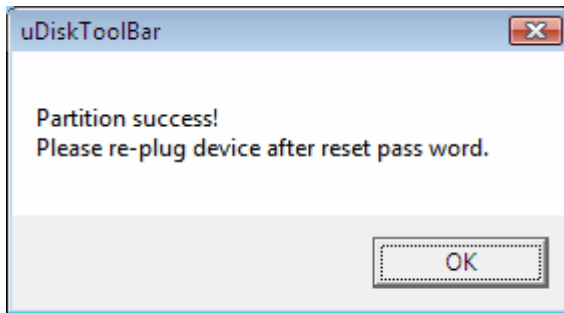


- (A) Input Public and Security area size.
- (B) Use keyboard (↑,↓,←,→) or mouse to adjust Public or Security area size.
- (C) Input Public+ Security Disk Label which you want.
- (D) Input new password 、confirm password and password hint.

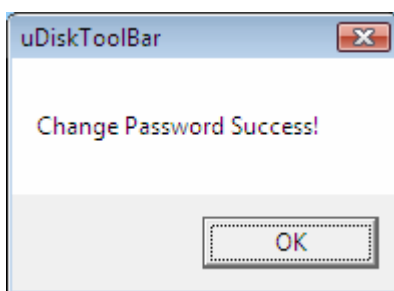
- Click “Partition” button to execute it.
- A warning message prompts user to backup all the data before partition.



- After Click “Yes”, it will show partition successful in a few second.



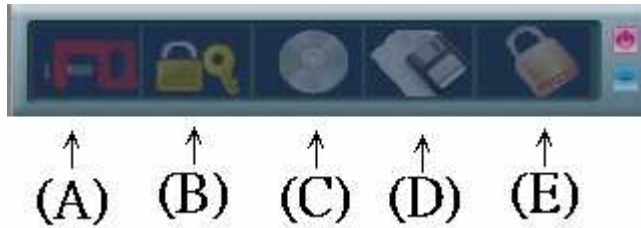
- After click “OK”, it will show “Change Password Success!”



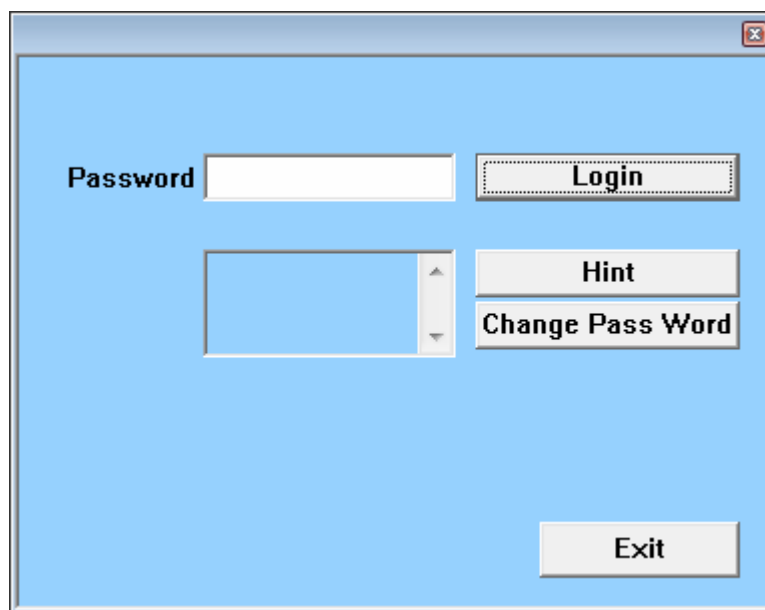
- After click “Y”, it will set input password, after confirm pass, it will point out modify password successfully.

3.2 Introduction of Security Area Manager

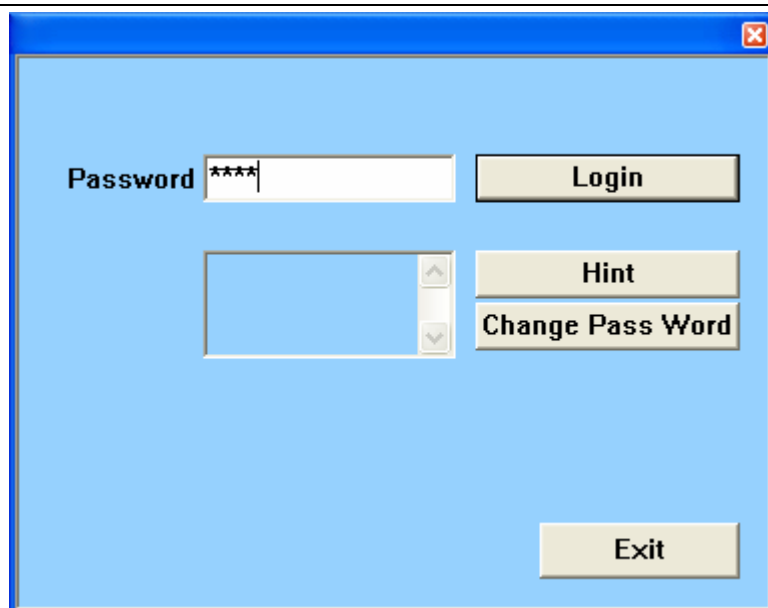
- Click “Security Area Manager” on the UFD Utility bar.



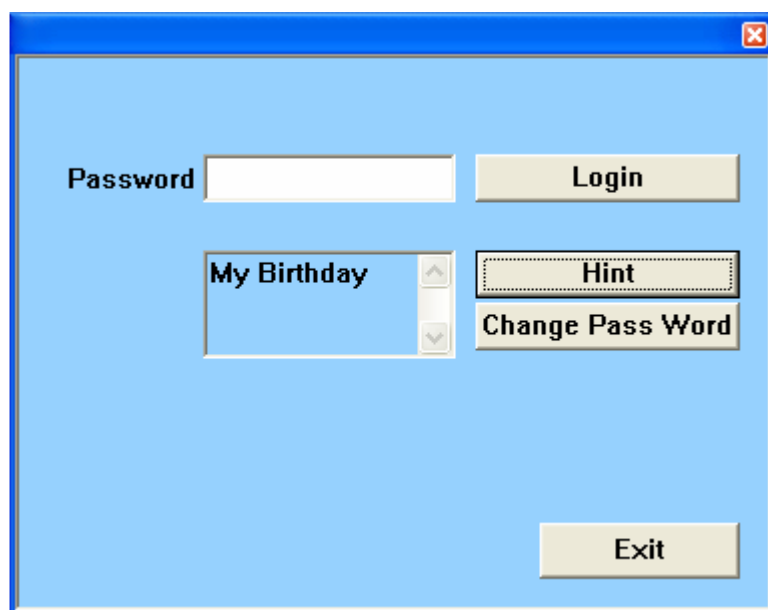
- Popup “Security Management” window



3.2.1 Log in Security area after input password



- Click “Hint” to recall the password, if the password was set but forget.

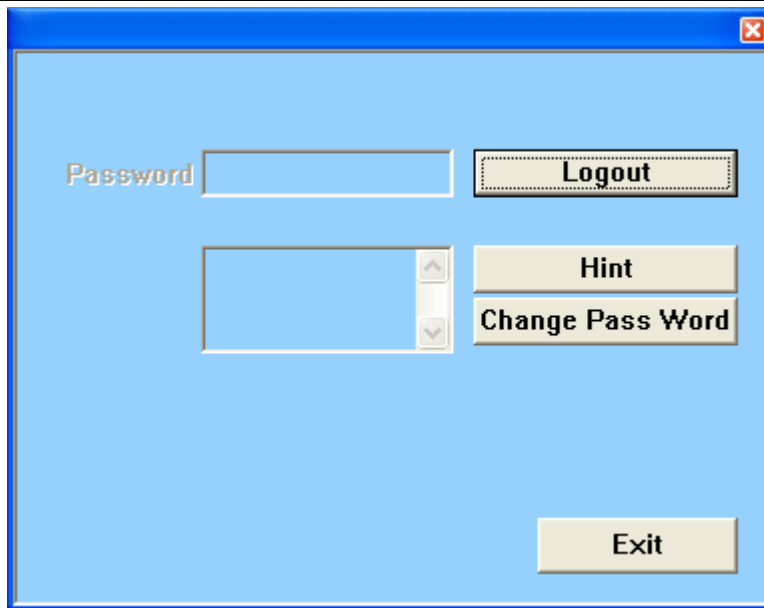


- Input the correct password to log into security area.



3.2.2 Log out security area.

- Click “Logout” in security area.

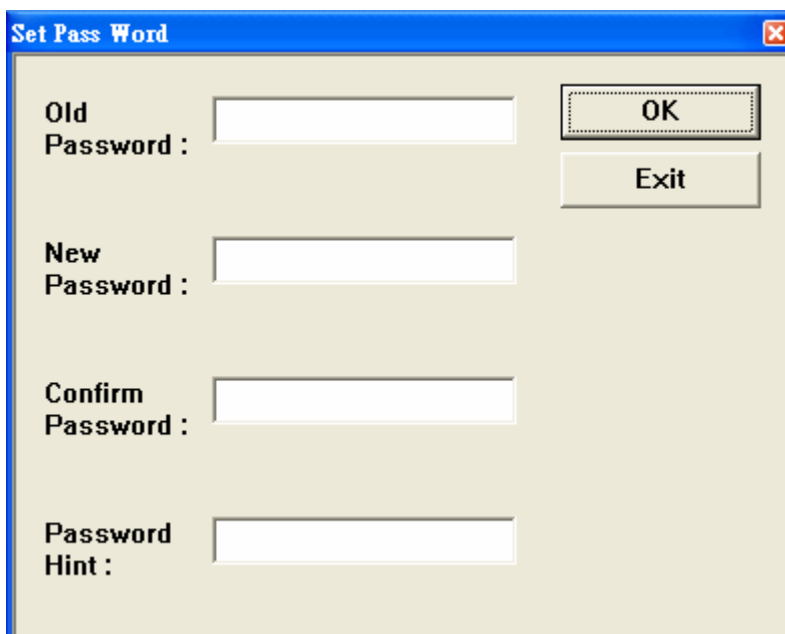


- It will be show logout success, and then exit security area, back in public area.



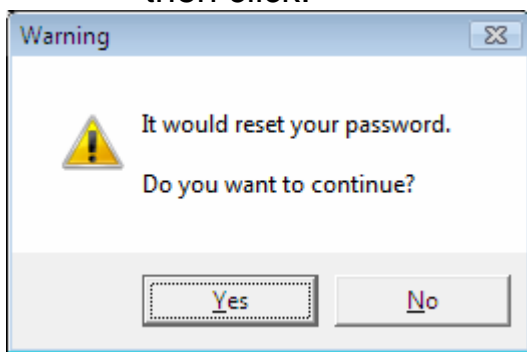
3.2.3 Modify password

- Use can click "Change Pass Word" to modify password; the "Set Pass Word" window will be popup.



- It will be point out warning message window after input old

password 、 new password 、 confirm password and password hint, then click.



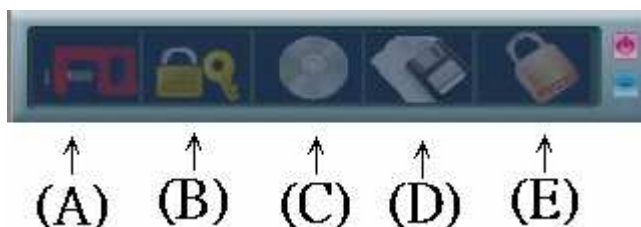
- After click “Yes”, the system will show change password success with popup window.



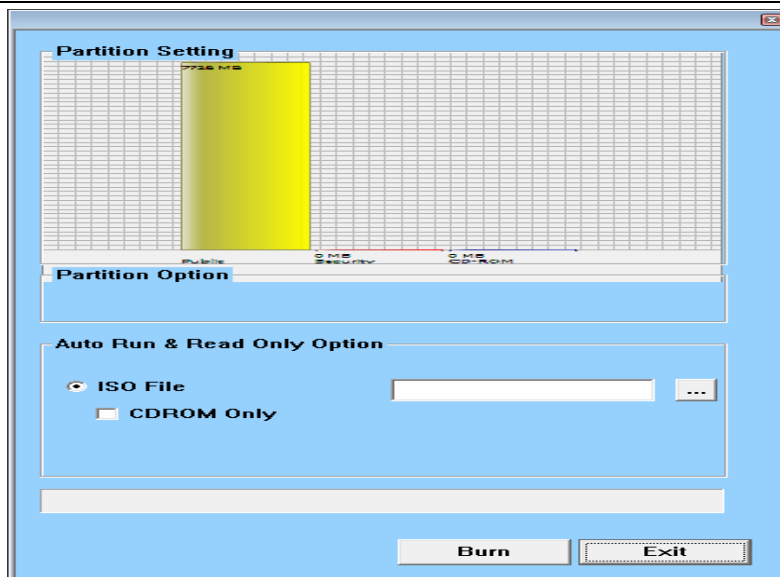
3.3 Introduction of AutoRun Manager

3.3.1 To use the existing ISO file to create a virtual CDROM for Autorun

- Click “AutoRun Manager” on the UFD Utility bar.



- “AutoRun Manager” Window will pop up right after click as below



- Select the path to store “ISO File”.
- If you want change virtual CD-ROM to normal USB disk, you only click “Burn”. Don’t input other setting.
- Click “Burn”.

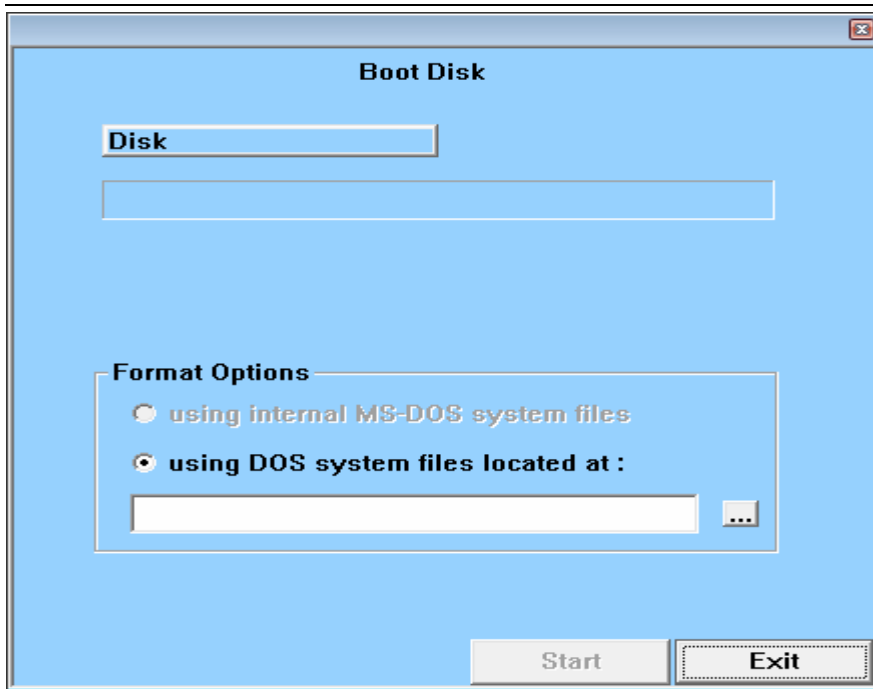
3.4 Introduction of Boot Disk Manager

- Click “Boot Disk Manager” on the UFD Utility bar.



↑ (A) ↑ (B) ↑ (C) ↑ (D) ↑ (E)

- Choice Dos boot file path in “using DOS system file located at” field. It can successfully make DOS boot system.

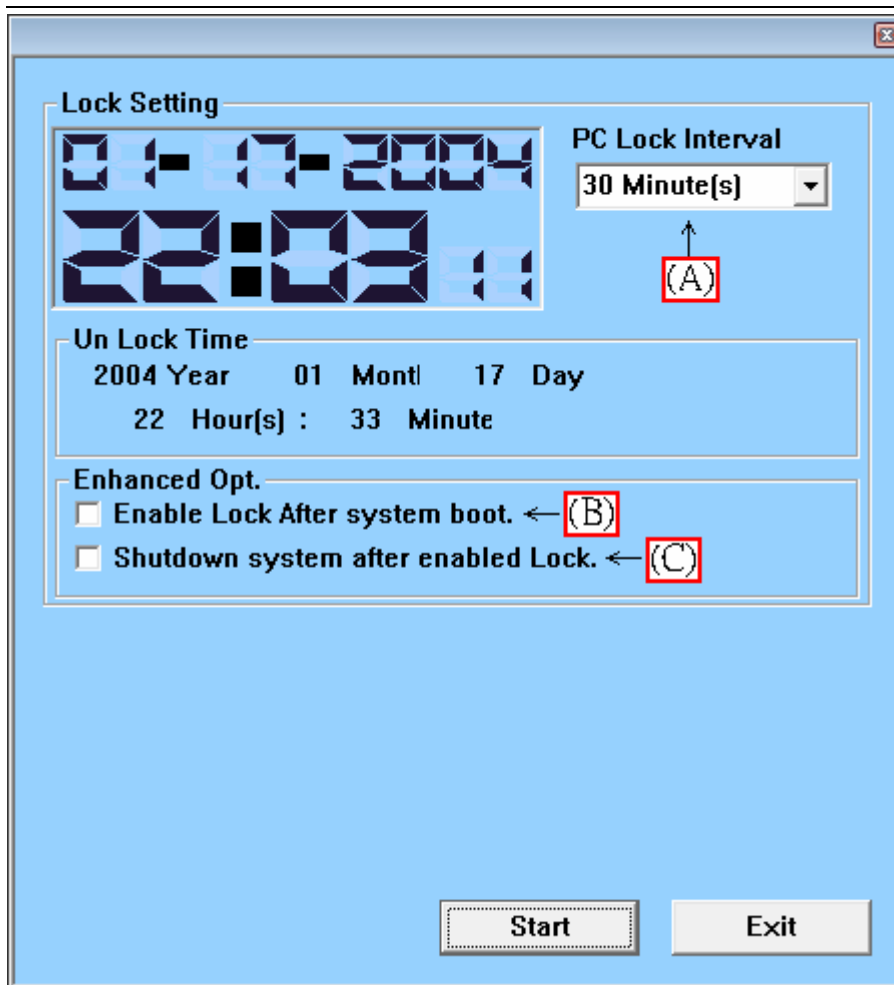


3.5 Introduction of PCLock Manager

- Click “PCLock Manager” on the UFD Utility bar.



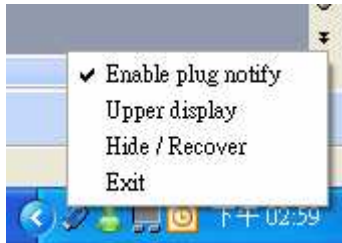
↑ (A) ↑ (B) ↑ (C) ↑ (D) ↑ (E)



- (A) PCLock Interval: Setting locking time with Keyboard and Mouse.
- (B) Enable Lock After system boot : After system reboot, it will be let Keyboard and Mouse locked. The Keyboard and Mouse will used normally after plug in USB Disk
- (C) Shutdown system after enabled Lock : After Keyboard and Mouse locked, the PC will shutdown automatically.

4. The icon appear in the tool Line

After run uDiskToolBar.exe, it will produce UFD icon in the tool line. And after click right button in mouse, it will show item as bellow,



4.1 Enable plug notify

- Mark" Enable plug notify", when plug in SMI UFD device, the tool line show" Device Arrival".



- When plug out USB device, the tool line show" Device Removed"



4.2 Upper display

- Mark this item, it will show the top layer in the tool line.

4.3 Hide / Recover

- It will appear the uDiskToolBar in the tool line or not.

4.4 Exit

- Leave the uDiskToolBar

