

21. Islamic colour theme will be followed in Islamic branches
22. Approved copper piping for conventional AC, wiring, control wiring, breakers, drain lines, complete in all respect

<b>CIVIL &amp; INTERIOR WORKS</b>	
<b>S No</b>	<b>DESCRIPTION</b>
<b>1</b>	<b><u>DISMANTLING</u></b>
	<b><u>The demolition work will be executed only after approval from HO.</u></b> Dismantling / removing of existing constructed structures, RCC, walls, slab, floor fixtures, tiles, ceiling, windows, doors, grills, shutters, wiring, piping, partition, with proper tools & equipment's with all necessary precautionary measures, to make surface ready to receive finishes, stacking useable dismantled materials at designated place, as per new plan, as directed by bank., and disposal of surplus stuff / debris etc. away from site.
<b>2</b>	<b><u>COMPACTION OF FLOOR</u></b>
	Checking of floor compaction, by removing of 18 inches to 24 inches deep from existing floor and if loose soil is found / not properly compacted soil, then proper earth filling, with sand and stone after excavation up to 2' will be provided and afterward 3 inches thick PCC having cement ratio 1:3:6 will be laid, complete in all respect.
<b>3</b>	<b><u>TERMITE PROOFING</u></b>
	Providing and carrying out termite proofing using FIPROKILL/ BIFLEX / DURSBANE or equivalent with a solution of 1 gallon of chemical to 50 gallons of water, sparing this solution @ 2 litres per sq. meter area (or liters per 10.76 sq. ft. Area) with a pressure ensuring at least 3" penetration in the soil of the area to be treated. The contractor will provide a guarantee for a period of five years against infestation of termite in the shape and mode approved by the Engineer, stating that in case of infestation, additional treatment will be provided by the contractor at no extra cost to the Client (horizontal & Vertical).
<b>4</b>	<b><u>REINFORCED CEMENT CONCRETE (If required)</u></b>
	Providing and laying, compacting finishing & curing etc. straight or curved cast- in place designed mix 1:2:4 Reinforced Cement Concrete using 1 Part of Ordinary Portland Cement or equivalent, 2 Parts of silt free local sand and 4 Parts of 3/4" thick downgraded crushed stone; mixed in a manner to achieve a cube strength of 3000 psi in 28 days, using 3/4" down crush stone & fine sand (free from silt & dust), including mechanical mixing, transporting, hoisting, lifting & placing at any height / depth, vibrating and curing etc. Complete in all respect including cost of Steel Reinforcement (3/8" dia deformed steel bars G-60 @ 6" C/C both ways, staggered double jaal in a manner that the alternate spacing b/w bars should not increase 3" C/C) & form work for Cement Concrete including cutting, bending, laying in position, making joint and fastening, removal of rust from bars, cost of binding wire and labor charges for binding of steel reinforcement: also includes cost of water tight form work and its removal. Complete in all respects, at 6" or 9" walls, column or as per direction of Engineer.

4	<b>MASONRY WORK</b>
	<b>Brick or Block Masonry</b>
	Providing and laying Brick or block masonry walls, 4" or 6" or 9" thick as per site requirement, with first class solid burnt brick set in (1:4) cement sand mortar in super structure including scaffolding, curing, drilling for wall ties where brick work joins R.C.C columns, walls etc. Complete in all respects as per drawings and specifications to complete satisfaction of the consultant.
	-
5	<b>PLASTER WORK</b>
	Providing and laying 1/2" or 3/4" thick plaster as per site requirement with cement sand (CS) mortar on masonry and concrete surfaces, with G.I. expanded metal mesh at the interfaces / joints of structures of different materials, staging and curing, plaster stopper, corner beads, channels for making grooves and drip course etc., where required and/or as directed by the Architect / Engineer complete in all respect.
	-
6	<b>PORCELAIN TILES ON FLOOR &amp; SKIRTING</b>
	Providing and laying glazed full body Porcelain tiles 24" X 24" at floor, of approved design, colour and pattern, china or bone colour Master full body porcelain or equivalent, setting in Stile dry bond (with cement), with matching color imported Grout. Complete in all respect, including curing, cleaning, finishing & hacking/chipping of existing surface for bonding where necessary, and 4 inches wide skirting at walls of the same tiles as above mentioned, with 1:2:4 PCC 50 mm thick, etc. as per specifications and/or as directed by the Architect / Engineer (at any elevation)
7	<b>CERAMIC TILES (TOILETS &amp; KITCHEN)</b>
	Provide and lay 8"X13" or 12"X12" Ceramic Tiles (Matt or Glazed) of approved quality, beige / ivory colour Master tile, 9117 base color white with grey pigmentation Salt and pepper style for bathroom flooring and walls (Master Tile 12" x 12" LPF 28-108 for bath walls in light Beige color and Flooring Dark Beige LPF 14-106) for flooring / walls and in slope, if required, with 1:4 cement sand mortar of required thickness to achieve a minimum overall finished floor thickness of 2", setting the tiles with neat cement mortar, grouting the joints 1/4" with matching grout of approved supplier, curing, cleaning, finishing & hacking/chipping of existing surface for bonding where necessary, etc. complete in all respect.
8	<b>FALSE CELING</b>
	<b>Gypsum Board (24"X24")</b>
	Providing & laying 8 mm thick gypsum board False Ceiling, 24" x 24" Elephant Brand or approved equivalent in straight, curved, tiles or multiple profiles, as shown on drawing section, fixed with imported powder coated, with groove, aluminum, " T" & "L" section with ceiling suspension system having provisions for light and AC grill. Complete in all respect as per drawing and instruction of Bank's Engineer.

9	<b><u>COLUMNS CLADDING</u></b>
	Providing & making oak wood Cladding with 1/2" MDF board over Solignum treated partial wood framing horizontal and vertically over column from +2'-6" elevation up to false ceiling level as per drawing. Including all fittings polishing etc., complete in all respects. From 0' - 0" to 2'-6" Porcelain tile Spanish cladding or equivalent.
10	<b><u>WOODEN CABINETS</u></b>
	<b><u>Kitchen Cabinets</u></b>
	Providing and installing in position wooden pantry cabinets, 18" deep wall cabinet and 24" deep base, consisting of PARTIAL wood battens / framing, 3/4" thick chipboard 600 density shelf, partition and shutter, with beach wood lipping, MDF drawers with imported roller runners, hinges imported Japanese type or equivalent to show 1/4" groove in between, approved Fomite Formica finish on both sides of shutter, including all kind of best quality hardware's, spring hinges, SS handles, locks etc. Complete in all respects.
11	<b><u>Full Height Cabinets (for Record Room) / Store</u></b>
	Providing and fabrication in position <b>TWO</b> full height cabinets in record room (3' wide 7' high & 18" deep), consisting of 3/4" thick BEACH laminated board boxing with 3/4" thick beech wood Formica finished leaves. 1/4"x 3/4" solid Beech wood lipping with 1/2"x1" thick beech wood frame would be provided in front of boxes with clear lacquer polish. All fittings i.e. screws, bolts imported Italian hinges or equivalent, catchers, locks, handles and all other accessories are part of the job including polishing, and anti-termite treatment etc. Complete in all respects. .
12	<b><u>INTERNAL PAINT</u></b>
	Providing and applying with Roller, Ash white, Matt finish water based paint (ICI/Berger or equivalent) minimum three coats of approved shade over a coat of primer to internal plastered surfaces, base preparation consisting of rubbing with sand stone, filling the uneven surface with putty, rubbing with sand paper and preparation of smooth surface perfect in all respects. Complete in all respect as per specifications and/or as directed by the Architect/ Engineer.
13	<b><u>WOODEN DOOR / FRAME / CHOWKAT / Beading</u></b>
	<b>DOOR FRAME:</b> Providing and fixing of required width, 16 SWG, GI door frames for bath, kitchen, stores, with polishing, including Lintels, hold fasts, where ever required, complete in all respect including painting / polish with proper beach / diyar wood beading.

	<b>SKIN DOORS D1-2'-6"x7'-0"</b> : , 1-1/4 inches thick (for Toilet/Kitchen) Provide and install doors consisting of best quality Malaysian skin, pressed over best quality treated partial wood framing, with approved quality of door locks, handle, tower bolt, hold fast, stopper, hardware and paint /polish, complete in all respect.
14	<b><u>ALUMINUM WINDOWS / VENTILATOR</u></b>
	Providing, fabricating and fixing in position heavy duty deluxe section approved color anodized aluminum local extruded Pak cable or equivalent (thickness of section 2mm minimum) or size using 4" wide section, 6 mm distortion free approved glass with gasket neoprene channels. Aluminum surfaces shall be anodized in approved color finish and shop protected including all accessories, fittings, rubber, locks, seals, neoprene weather strips between frame and wall and frame edge trimming, gasket, screws, fly screen etc. and approval of the Consultants, complete in all respect, as per drawing / required size.
15	<b><u>GLASS DOOR (Manager Cabin, Main Entrance, ATM front)</u></b>
	Providing, fabrication & fixing 12 mm thick glass door with top & bottom locking system, 4" Aluminum D-48 by Lucky or equivalent Pak Cable section, with 12mm thick Middle East / Saudi Arabia or equivalent clear glass with frost film and Bank's monogram, Approved Ajrak film, with gasket size and shape as shown on drawing, including bolts, D lock, nuts, screws aluminum channel, handle, floor machine (New Star Japan or Koreanor equivalent), locks etc. Complete in all respects as directed by Engineer.
16	<b><u>INSTALLATION OF VAULT / LOCKER ROOM DOOR</u></b>
	Lifting & Fixing charges of Bank's supplied Vault / Locker Doors, welding of door frame with RCC MS bars, and to facilitate the Vendors. Complete in all respects.
17	<b><u>ALUMINUM SECTION &amp; fixed FRONT GLAZING</u></b>
	Providing and installation 4" Deluxe section D 48 of LUCKY or equivalent fixed aluminum glazing for elevation with hinged panels including latches, rollers, rubber gaskets all necessary hard ware and fittings, with frost film and Bank's monogram application of silicone for joints including approved 8 mm thick imported clear glass(KSA OR GHANI or equivalent) glass with complete as per drawing and as directed by the Architect.(Recommended Manufacturer: Pakistan cables OR Lucky)
	Complete in all respects ( <u>at front</u> )
19	<b><u>GLASS PARTITION</u></b>
	Providing and installation 12mm thick glass KSA/UAEor equivalent polished glass with 100mm top & bottom rails, brush finish SS-304, lucky or equivalent Pak Cable section with frosted film surface as per approved design. Contractor is required to provide joints between the panels with minimum 5mm thick clear silicon from Dow corning or other approved by the Engineer. Complete in all respects. ( <u>in Manager room</u> )

20	<b><u>WINDOW BLINDS</u></b>
	Providing and installation of imported VERTICAL Blinds, in imported synthetic fabric (5" wide) with suspension mechanism, approved shade & colour (Light grey). Complete in all respect at all outside glasses only.
21	<b><u>SECURITY GRILLS</u></b>
	<b>Wrought Iron Grills for external windows, AC outers (If necessary)</b>
	This security grills will be provided at all external windows, ventilators., inside the fixed entrance glazing,, Providing and Fixing M.S Security Grills to windows, AC outers, comprising of 1/2" square bars @ 6" c/c 1"x1-1/2" MS pipe 16 gauge, welding, grinding, finishing, rubbing 3 coat of enamel paint (ICI,NIPPON,BERGER or equivalent) red oxide before paint. Complete in all respects, as per standardized design and /or as shown in drawing. as per approved design, attached herewith. Further proper lockable grills with abiove specification will also be provided for Generator and all AC outdoor units.
22	<b><u>SECURITY ROLLING SHUTTER</u></b>
	Providing and fixing Mild Steel Rolling Security Shutter at front main entrance door , before glass doors, ATM Room's door, outside windows, made of 20 s.w.guage GI sheet, guide channels 10 gauge MS sheet and Roll-up durable mechanism (Spring & MS Bar etc.). with 2.5" Dia box, consisting of steel frame of M.S. channel 2"x1.25"x1" (50x30x3 mm) angle iron 1.5"x1.5"x1" (40x30x3mm)M.S plate 1"x1"xa" (300x300x3 mm) G.I. pipe 1.5" (37mm) Ø, springs 2'(600mm) c/c. Rollers 24 S.W.G G.I. Covering 1'x1' (300x300 mm) with S. Steel sheet 18 S.W.G, handles, holdfast, etc. center of the roller sheet to be in chicken foldable type window / mesh ( 6" X 12" can be covered with sliding panel, from inside ) for looking outside, vertical removable channel. Complete with sliding bolts handles including 3 coats of enamel paint (ICI or equivalent) including base coat of anti-rust primer, Complete in all respects, including all types of hardware etc. as per satisfaction of the consultant and engineer incharge. as per attached layout .
23	<b><u>SECURITY DOORS</u></b>
	<b><u>Security Grill Door</u></b>
	Providing and fixing the MS enamel painted security grill door panel of 3/4" MS square solid bars @ 6"x8" c/c both ways welded with 1-1/2"x3/16" MS flat Frame and covered with MS Sheet 14 gauge, with all locks, including all necessary fittings. Complete in all respect at main entrance. Thus at entrance, inside will be security grill, the glass will be in center and rolling shutter will be outside.
24	<b><u>EMERGENCY EXIT M.S DOOR</u></b>

	Fabricating, providing and fixing fire exit door with 16 S.W.G M.S 3/4" square pipe, 16 SWG MS sheet pressed over this frame, at both sides, sheet frame painted with approved enamel colour including 2" x 5" eye level opening with proper MS shutter of 16 swg sheet to look outside , including best quality hinges, locks, handles, hold fasts and other necessary hardware etc. size as per site. Complete in all respects as per drawing attached herewith, , specifications and as directed by the Bank.
25	<b>EXTERNAL PAINT</b> Provide and apply with Roller / brush paint WEATHER SHEILD (ICI/Berger or equivalent) minimum three coats of approved shade over a coat of primer to internal plastered surfaces, base preparation, primer, smooth filling etc. complete in all respect as shown on the drawings specifications and/or as directed by the Architect/ Engineer.
26	<b>ATM INTERNAL DOOR</b> This consists of MS, 16 SWG, 3/4"x3/4" square pipe grill, 8" center to center distance, both ways, inside ATM room, 16 SWG GI sheet fitted over grill from atm room side and 3mm ply fixed from branch side. with lock, handles, polishing & finishing and making peep window 8" x 2" at a height of 5'-0 from floor level., this also include 16 SWG sheet made door frame, suitable to cater the weight of door, with hinges, holdfast, Complete in all respects or as directed by the Engineer
27	<b>MORCHA</b> Providing of block/brick Masonry 3' X 4' feet minimum inside, morcha in proper shape, totally covered from all four sides with 2 feet door & Exit door Sp), inside lock, 5X12 inches inspection opening at 5 Feet 6 inches height , 18 inches raised floor, stole, fan, paint, complete in all respect., where possible only
28	<b>ATM ACCESS RAMP FOR DISABLE PERSON</b> A three feet wide CC ramp, at 30 degree, will be provided for disable person. Wherever possible. The ramp tiles will be grooved tiles and at one side, SS railing will be provide
29	<b>Front Elevation</b>  The front elevation of the Branch will consist of proper CC steps, fixed on it approved marble of 1" thick with nozing on steps & riser while 24"x24" floor tiles at platform. The portion other than window and door will consist of Bank's approved elevation of combination of grey Porcelain tiles with approved AJRAK tiles pattern above 24"x24" black tiles which will be installed up to 2' from ground level, as per attached design, as directed by the Bank's Engineer, If branch front/platform level is higher than 2' from ground level, SS railing, 2" dia will be provided at both sides of main entrance & ATM steps.
<b>PLUMBING WORKS</b>	

S. No	DESCRIPTION
	<b>General Specification</b>
	Providing and fixing / making of complete one kitchen fittings, two bath rooms fittings with all necessary best quality and proper sized upvc water pipes, best quality fitting, 4 inches and or 6 inches best quality Dadex or equivalent UPVC pipes, gasket type fittings, trap, joints, waist best pipes with best SS trap covers, All pipes and pvc fittings will be Dadex or equivalent, all other / fittings/ fixtures will be <b>MASTER / SONEX/ GROHE CHINA</b> or equivalent, <u>plastic coated</u> . (In one wash room Indian WC & other will have European type commode as specified below).
1	Providing and fixing European type ceramics ware coupled water closet, ( <b>PORTA</b> ) or <b>equivalent</b> , white / light colour, including 3 gallons cistern, P/S trap, C.P tee stop cock with wall cups, connection pipes, "SONEX", "MASTER ( Royal)", hinged double bacolite seat and cover of best quality, all joints to services and drains, plugging and screwing as necessary to the structure and make good the same, complete in all respect as per specifications and drawings.
2	Providing and fitting Glazed earthen ware water closet ( <b>PORTA</b> ) or <b>equivalent</b> , combined with foot rest, Best Quality including Plastic made Flushing tank, SONEX tee stop cock for cistern water inlet and C.P connector with nuts and fitting, approved other ancillary material complete in all respect.
3	Providing and fixing Wash hand Basin with pedestal, <b>PORTA or equivalent</b> , Ivory colour /white colour "SONEX" waste coupling, plug with C.P brass chain, 1.5" dia. P.V.C ( D type) waste pipe connections to water lines, tee stop cock for cold and hot water inlet connector with nuts and fitting, waste pipe waste coupling , plugs with chain other ancillary material C.P grating including C.P bottle trap, testing etc. complete in all respect and as directed by the Engineer.
4	Providing & fixing best quality Stainless Steel imported Kitchen Sink, <b>Balraco or equivalent</b> make (40" x 20") 1000mm x 500mm sink with CI or WI brackets 150mm (6") built in wall, 40mm(1 1/2") rubber plug & chrome plated brass chain, 40mm (1 1/2") C.P brass waste, pillar tap 2 way deluxe, 40 mm (1 1/2") dial malleable iron or C.P. brass trap, Bottle trap and unions. Make requisite holes in walls & floor for pipe connections & make good with approved material. (with SONEX or equivalent fittings).
5	Providing & fixing PVC floor drains of 4" dia of make Nikkassi, Pak Arab or approved equivalent, having minimum guaranteed 2" water seal with screw down C.P cover, peripheral drains with or without a vent arm. Make requisite holes in walls, floor for pipe connections & make good with approved material, including SS drain / grating with side perforation.



6	Provide & fix approved quality chromium plated towel rails 750mm x 20mm (30"x3/4") with brackets and C.P screws. (Taiwan make or equivalent)
7	Provide and fix approved quality C.P toilet paper holders and coat hook. (Taiwan make or equivalent)
8	Provide & fix chromium plated soap dish or master plastic, of approved quality with C.P screws. (Master /Sonex or equivalent)
9	Provide and fix Muslim Showers manufactured by Master/Sonex or equivalent, plastic coated, complete with stop cock and controlled spray head.
(a)	
(b)	Providing and fixing 15 mm dia C.P. plastic coated mixer with C.P pipe 15 mm dia, of Master, Sonex or approved eq complete including pipe connections, all fittings, testing etc.
i)	For Wash basin
ii)	Kitchen Sink Mixer, Master/Sonex or equivalent Grohe China, Plastic coated,
	Kitchen Sink Mixer (Plastic Coated) . Master, Sonex or equivalent
10	Providing, fixing, jointing and testing Polypropylene Random (PPR) pipes make Dadex / AGM or approved equivalent pressure pipe for cold/hot water as per DIN 8077-8078, PN-20 for pipes and DIN 16962, PN-25 for fittings (poly fusion welded joints) inside building including fittings and specials (sockets, tees, elbows, bends, crosses, reducers, adaptor, plugs and union etc.) supported on walls or suspended from roof slab or run in chases including pipe hangers, supports, cutting and making good the chases and holes, its painting and insulation against sun light complete in all respects. Conforming to BSS. Cut and make good with Test and Commission for cold and hot water system. with appropriate dia and sizes.
11	Provide and fix of Gate valve, Threaded ends, bronze body with union bonnet, non-rising stem and wedge disc. Suitable for 8.5 bars SWP and 250 deg. F., manufactured by KITZ (Japan) or approved equivalent.
12	Providing approved / appropriate dia , size, and fix cast UPVC pipes( AGM/dadex /vebro turkey Brand or equivalent) including fittings such as tees, elbows, sockets, wyc, hangers/supports etc. conforming to BSS for soil waste and vent pipes as embedded in floor and walls or suspended from slab or clamped to wall including plaugsm hangars, beds, Tees, Yees. Include for making requisite number of holes in walls and floors where required and making good the same as necessary to the structure labeling, testing to 6.5 feet water height complete.
13	Provide and construct gully trap with 12"x12" cast iron frame and cover, including excavation, backfilling, masonry, plaster internally and externally vitreous China trap etc. complete and approved by the Engineer.

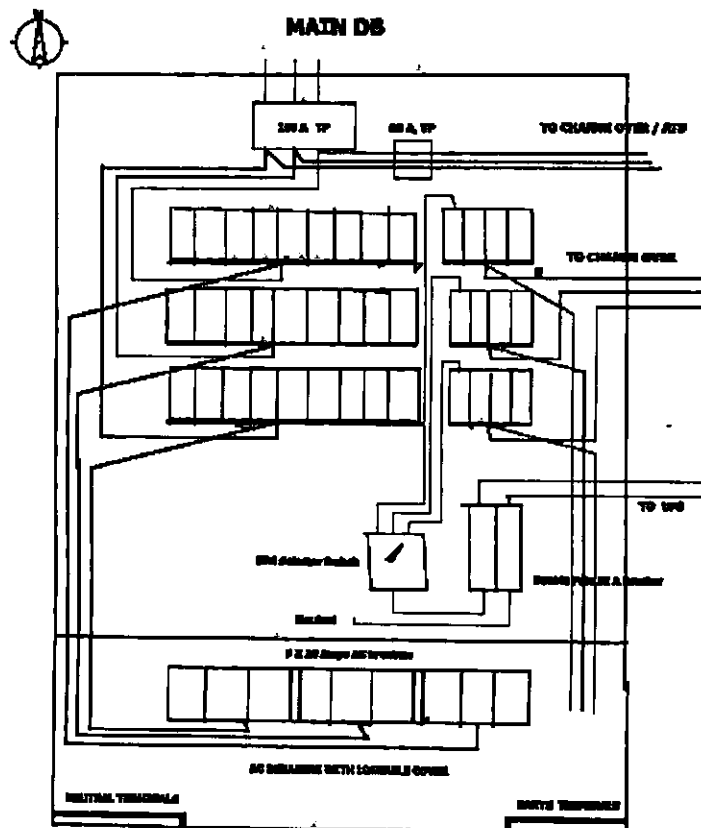


14	Provide and construct manholes for sewer with 24"x24" C.I frame and cover including 8" Masonry, puddlo plaster internally and externally up to depths; shown on drawings and approved by the Engineer. PCC 1:2:4 base slabs, benching with 1:3 cement sand mortar including 24" dia manhole cover, frame and rungs, complete in all respect.
15	Construction of Septic Tank one no size 6'x4'x5' avg depth at per site conditions in all respects as per drawings.
16	Make Sewer Connection to existing Sewerage disposal system with existing main line, Complete in all respect including all material. With 6 inches dia UPVC pipes with fittings.
17	Make Water Connection to existing Water supply system using pprc pipe fitting of Dadex or equivalent,
18	Providing, installing & testing of Over Head Fiber Glass Water Tank make Dura or approved equivalent, with 500 Gallons storage capacity, including electric pump, motor and all necessary fittings etc. Complete in all respects as per instruction of Architect.
<b>ELECTRICAL WORKS:</b>	
<b>S. No</b>	<b>DESCRIPTION</b>
<b>A. INTERNAL WIRING</b>	
1	Supply, installation and commissioning of Light Circuit wiring, from MCB in DB to Switch Board to be wired with 3x2.5mm sq. (P+N+PE) PVC insulated 300/500 V grade wire, manufactured by M/s. AGE, Pioneer, FASTor equivalent, pioneer or as specified in Annexure A, in and including cost of 1" dia. heavy duty PVC conduit make Popular, Beta, installed on roof slab, above false ceiling, or concealed in walls, or as required as per site conditions, all PVC conduit accessories, pull boxes, steel pull wires, Complete in all respects. Each circuit shall have independent CPC. Maximum wiring of 2 light circuits can be pulled through 1" dia. PVC conduit. <u>Note:-Supply Certificate issued by Company will be attached with bills</u>
2	Providing, Installation, testing and commissioning of wiring of One light point controlled by one switch and wired with 3x1.5 mm sq. PVC insulated wires 300/500 V grade, in and including cost of 3/4" dia. heavy duty PVC conduit recessed in wall, columns slabs or above light carrier all PVC conduit accessories, 3" high PVC junction boxes, pull boxes, steel pull wires, PVC flexible conduit from ceiling junction box to light fixture with brass chuck nut including cost of 3x1.5mm sq from Ceiling Junction Box to Light Fixture, M.S. sheet steel switch box 16 SWG with earth terminal and 2 coats of enameled paint, M.S. box shall be of the same size as that of 1, 2 or 3 gang flush type plate switches, including cost of gang type light switches 10 amps.

3	Providing, Installation, testing and commissioning of wiring of <b>Two or three or four light points</b> controlled by one switch and wired with 3x1.5 mm sq. PVC insulated wires 300/500 V grade, in and including cost of 3/4" dia. heavy duty PVC conduit recessed in wall, columns slabs or above light carrier all PVC conduit accessories, 3" high PVC junction boxes, pull boxes, steel pull wires, PVC flexible conduit from ceiling junction box to light fixture with brass chuck nut including cost of 3x1.5mm sq from Ceiling Junction Box to Light Fixture, M.S. sheet steel switch box 16 SWG with earth terminal and 2 coats of enameled paint, M.S. box shall be of the same size as that of 1, 2 or 3 gang flush type plate switches, including cost of gang type light switches 10 amps.
4	Providing & wiring of <b>1-3 pin 15 Amps</b> power socket outlets (for General Use) wired with 2x4mm <sup>2</sup> +1x2.5mm <sup>2</sup> CU/PVC insulated cable 300/500 Volt grade, make, Fast, Pioneer, AGE, in 25mm dia PVC conduit make Beta, Popular, recessed in wall/floor, above false ceiling or as required as per site conditions, all PVC conduit make Beta accessories, pull boxes, steel pull wires. Complete with all conduits & wiring accessories including 15 Amps, 3 pin combined switch socket make Clipsal (Austria), Panduit, MK (UK), Legrand (France) or approved equivalent. Wiring shall be done directly from the MCB installed in the respective DB without any claim of circuit. Complete with suitable size 1.5mm thick sheet steel back box recessed in wall.
5	Providing & wiring of <b>1-3 pin 10 Amps</b> power switch socket outlets (for RAW supply / WAPDA) wired with 3x2.5mm <sup>2</sup> 1 core CU/PVC insulated cable in 25mm dia PVC conduit make Beta, Popular, recessed in wall/floor, above false ceiling or as required as per site conditions, all PVC conduit make Beta accessories, pull boxes, steel pull wires etc. Complete with all conduit & wiring accessories including 10 Amps, 3 pin combined switch socket make Clipsal (Austria), MK(UK), Legrand (France) or approved equivalent. Wiring shall be done directly from the MCB installed in the respective DB without any claim of circuit. Complete with suitable size 1.5mm thick sheet steel back box recessed in wall.
6	Confirming to same specification as mentioned above in item A-08, but outlet to outlet wiring. Complete in all respect.
7	Providing & wiring of <b>2-3 pin 13 Amps</b> power switch socket outlets (for UPS) wired with 3x2.5mm <sup>2</sup> 1 core CU/PVC insulated cable in 25mm dia PVC conduit make Beta, Popular, recessed in wall/floor, above false ceiling or as required as per site conditions, all PVC conduit make Beta accessories, pull boxes, steel pull wires. Complete with all conduit & wiring accessories including 13 Amps, 2/3 pins combined switch socket (duplex) make Clipsal (Austria), MK(UK), Legrand (France) or approved equivalent. Wiring shall be done directly from the MCB installed in the respective DB without any claim of circuit. Complete with suitable size 1.5mm thick sheet steel back box recessed in wall.

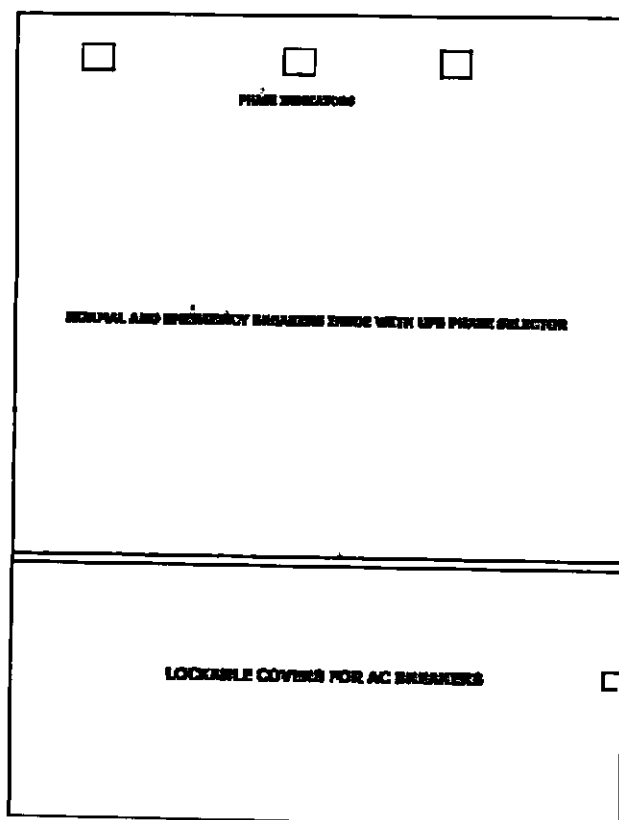
7	Installing & wiring for bank's supplied Split A/C's unit from distribution board to respective AC in 1-3 pin 16 Amps switch socket, for outer unit or indoor unit, as the case may be, wired with approved brand 2x4mm <sup>2</sup> + 1x4mm <sup>2</sup> 1 core CU/PVC cable, from DB to Indoor unit and indoor unit to outdoor unit, in 25mm dia PVC conduit make Beta, Popular, recessed in wall/floor, above false ceiling or as required as per site conditions, all PVC conduit make Beta accessories, pull boxes, steel pull wires etc. Complete with all conduit & wiring accessories including 16 Amps, 3 pin combined switch socket make Clipsal (Austria), MK(UK), Legrand (France) or approved equivalent. Wiring shall be done directly from the MCB installed in the respective DB without any claim of circuit. Complete with suitable size 1.5mm thick sheet steel back box recessed in wall. Complete with all accessories including termination.
	<b>TECHNOLOGY BOXES for 7 users + Time attendance, UPS room, photo state machine</b>
8	Providing, Installation, wiring from respective breaker in respective DB, of CLIPSAL make <b>Floor / wall Technology Box</b> with cover, 1.5mm thick sheet, steel fabricated floor mounted water tight weather proof, fitted with two 13 Amps, UPS power flat pins and one 13Amps raw power round pin sockets, one dual face plate with RJ-45 out let for Data point and one RJ-12 I/o sock. for telephone, with power socket wired with approved 2.5 mm wires with earth wire of same size, from respective UPS and or normal DBs, data point and telephone points with cat-6e Clipsal /3M wire and Outlets. Complete in all respects from patch panel to Technology box, and same cables from Telephone Tag block to telephone I/O, with suitable PVC pipes, termination at both ends, tagging, numbering, including floor / wall cutting. Include termination of electrical wires at sockets, and DB, Data wires at I/O of face plate and at patch panel on other end, with telephone points at RJ-12 I/O at Box and 10 pairs Tag Block with MS box, at other end with complete termination, testing and submission of test report and 20 years termination warranty.. This work also include all respective cabling, proper tagging / numbering at both ends of all Data and telephone cables. This work is complete in all respect.
	<b>TOTAL</b>
	<b>B. FITTING &amp; FIXTURES</b>
9	
i)	Philips Down light FBH with 24 W, Philips PLC Lamp energy savers or equivalent
ii)	Mirror Light Fixture Philips GMP-118-84 or Equivalent
iii)	Recessed Ceiling Down light fixture (6" dia) circular shape equivalent to Philips Model Lunar with Optogan Emotion Series PLC lamp installed vertically and aluminum reflector as approved by architect./Engineer.
10	Supply, installation and commissioning of 12 inches dia <b>Exhaust / Bracket Fans</b> of following sizes, plastic body, louvers, all necessary fixing accessories, make Pak Fan, Asia, Climax, National or as manufactured by any one of the manufacturers or equivalent including its complete wiring. Wash rooms, Kitchen & Guard Post.
11	<b>MAIN SWITCHES AND DBs ( General Specifications )</b>

	All concealed with 16 SWG MS powdered coated box for DBs and 18 SWG MS sheet box for outside 100 Amps, TP breaker, with door, hinges, lock, Amps meter, Volt meters, selector switches, LED indicating lamps, earth strips with 10 holes, neutral strips with 12 holes, backed powdered coating, water proof gasket, The work include all internal wiring with / 99.995 copper busbars, proper sized above mentioned approved PVC wires, at all DBs from TP breakers / Switches with standard copper termination of each breakers at all phases., wiring for volts /Amps meters, selectors, indicators etc., thus complete DB in all respect with DB body earthing with earth wire.. All breakers in all DBs will be Japanese Brand, Terasaki, Clipsal; MG, Schneider, Legrand. or equivalent
11a	<b>Out Side Breaker / Switch at incoming line</b>
	One 100 Amps TP , approved Brand main breaker will be installed outside for KESC / WAPDA, incoming power supply, including connection to breaker, outgoing three phase four wires approved brand 25mm2 PVC cable from breaker to inside main DB breaker, with earthing of its above referred MS box.
	<b><u>MAIN DB, Raw power, AC and power sockets with Emergency power</u></b>
11b	Main DB will be above referred specification but will have one 100 Amps Main Breaker, one TP 60 A breaker fot ATS supply, 18, 15/20 A breakers of Terasaki / Legrand/ Clipsal, or equivalent at KE / Wapda side, 9, 20 A breakers for generator side, One three phase selector switch for UPS supply,, one double pole 32 A breaker for UPS, 9 , 20 A breakers for AC, at bellow with provision of generator wiring, volt meter, selector, three indicators, complete with all respect, Earth and neutral terminal, as per attached drawing





ON FRONT COVER


**11c UPS DB**

This DB will also be same specification but consist of one SP, two pole incoming breaker and 6, 10 Amps and 3, 15 Amps breakers and one two pole 15 Amps breaker for ATM. With 3x4mm wires till ATM power socket.

**12 Telephone System**