

## Bid Evaluation Report

1. Name of Procuring Agency: Information Technology Department, Government of Sindh
2. Tender Reference No: INF-KRY No.353/11
3. Tender Description/Name of work/item: Construction of Boundary Fence for IT CITY
4. Method of Procurement: Single Stage -Two Envelope Procedure
5. Tender Published: Daily Dawn, Daily Kawish and Daily Ibrat Dated 2<sup>nd</sup> February, 2011  
(Print & Electronic Media (SPPRA ID No. & News papers names with dates))
6. Total Bid documents Sold; 16 Nos.
- Total Bids Received: 07 Nos.
8. Technical Bid Opening date: (if applicable) 5<sup>th</sup> March, 2011 (Provide details in separate form)
9. No. of Bid technically qualified (if applicable): 04 Nos.
10. Bid(s) Rejected: 03 Nos. (Did not meet minimum Qualification Criteria)
11. Financial Bid Opening date: 28<sup>th</sup> April, 2011
12. Bid Evaluation Report:

S No	Name of Firm or Bidder	Cost offered by the Bidder	Ranking in terms of cost	Comparison with Estimated cost	Reasons for acceptance/rejection	Remarks
0	1	2	3	4	5	6
1.	M/s. Nawab Brothers	Rs.39,992,036/-	1 <sup>st</sup> Lowest	18.54% Below the estimated cost of Rs.47.408 Million	Qualified as per Minimum Qualification/Eligibility Criteria	Recommended for award of work.
2.	M/s. Crescent Construction Syndicate (Pvt.) Ltd	Rs.57,795,617/-	2 <sup>nd</sup> Lowest	17.97% Above the estimated cost of Rs.47.408 Million	Bid not confirming to the requirements of the criteria given in the NIT and Tender Documents.	Non Responsive
3.	M/s. Friends Construction Co. (Pvt.) Ltd	Rs.85,844,005/-	3 <sup>rd</sup> Lowest	44.77% Above the estimated cost of Rs.47.408 Million	Bid not confirming to the requirements of the criteria given in the NIT and Tender Documents.	Non Responsive
4.	M/s. Aaqib Builders (Pvt.) Ltd	Rs.3,054,269,898/-	Highest	6342.48% Above the estimated cost of Rs.47.408 Million	Bid not confirming to the requirements of the criteria given in the NIT and Tender Documents.	Non Responsive



NO. SO(T)/ITD/3-57/2009 (P-II)

GOVERNMENT OF SINDH  
INFORMATION TECHNOLOGY

DEPARTMENT  
DATED: 31<sup>st</sup> May, 2011

M/s Nawab Brothers (Pvt) Ltd.  
Suit # 238, 2<sup>nd</sup> Floor, Bhayani Shopping Center,  
Block-M, North Nazimabad,  
Karachi.

Subject:

AWARD OF THE CONTRACT / WORK ORDER FOR THE "CONSTRUCTION OF BOUNDARY FENCE FOR IT CITY" UNDER THE PROJECT TITLED "IT CITY (PHASE-I. CONSTRUCTION OF BOUNDARY FENCE & MASTER PLANNING)".

Please refer to your bid offered in response to the tender for "Construction of Boundary Fence for IT City" under the project titled "IT City (Phase-I, Construction of Boundary Fence & Master Planning)", competent authority i.e Secretary IT is pleased to accept your offer amounting to Rs.39,092,216/- (Rupees Thirty Nine Million Ninety Two Thousand Two Hundred Sixteen Only) BY accepting rebate / discount of 2.25% offer by you vide letter No. NBL/ITC/2011/130 dated May 2<sup>nd</sup>, 2011, subject to fulfill all requirements in accordance with the Scope, Specification, Design & Drawing and Rates, terms & conditions mentioned in the tender documents & proposals submitted by you. You are advised to submit work schedule within three (3) days.

You are also requested to submit 10% of Total Bid Cost as Bank Guarantee with in 7days after issuance of the work order. All terms & conditions defined in the agreement will be the responsibility of M/s Nawab Brothers (Pvt) Ltd..

(Farooq Ahmed Tajik)  
Section Officer (B&A)  
For Secretary to government of Sindh

Copy for information to:

1. Section Officers (Dev-IV), Finance Department, Government of Sindh.
2. P.S to Minister for IT, Government of Sindh.
3. P.S to Secretary, I. T. Department, Government of Sindh.
4. P.S to Director General, I. T. Department, Government of Sindh.
5. P.S to Special Secretary (S & T), P&D Department Government of Sindh.

Section Officer (B&A)

*Handwritten:* J. N. 21/06

*Handwritten:* Pl. make this letter record on concerned file.

*Handwritten:* AS. 21/6/2011

*Handwritten:* 02/06/2011

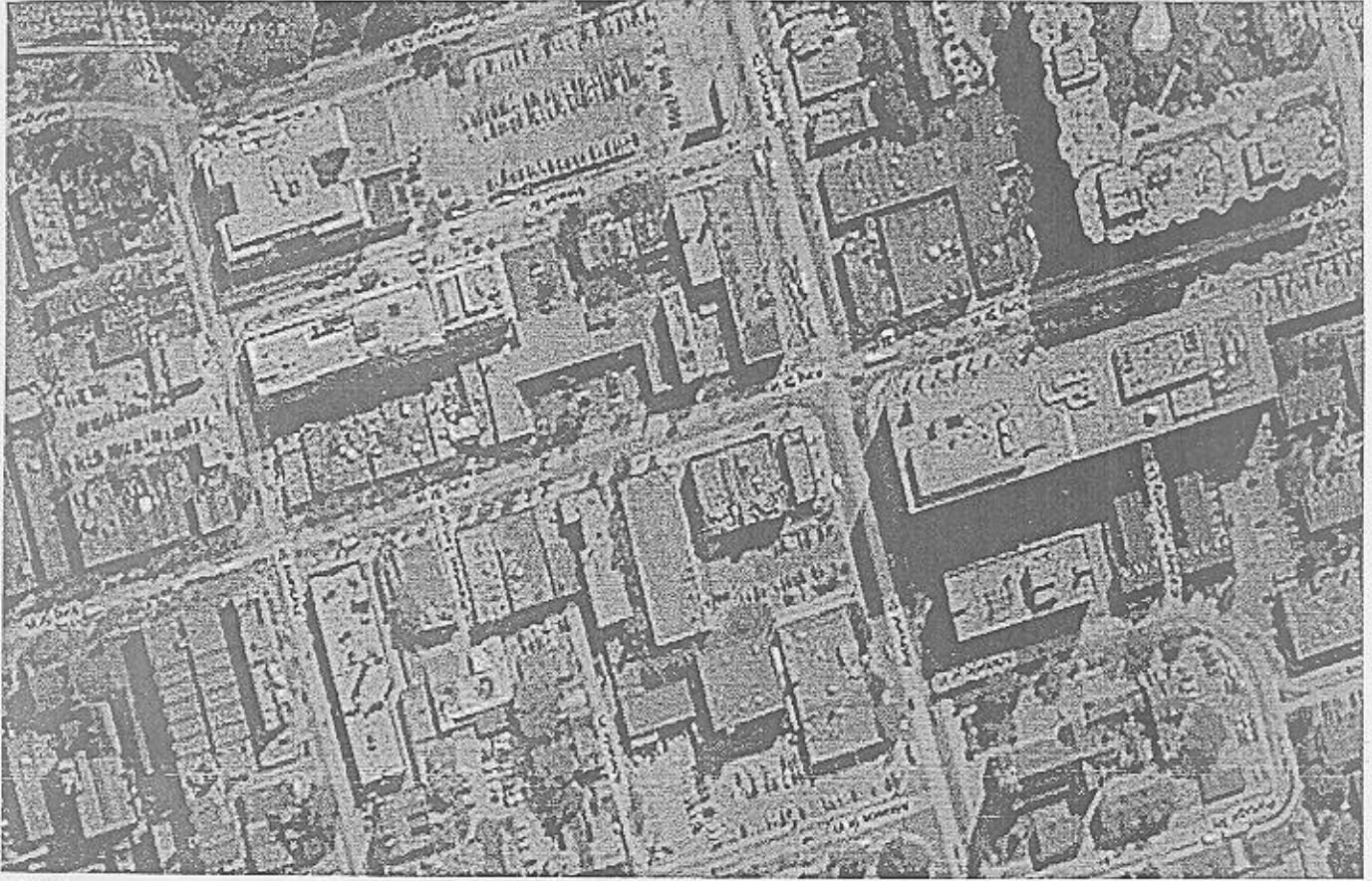
*Handwritten:* MRO (IT City) 02/06/2011

*Vertical handwritten notes on the left margin:*  
copy to... 01.06.11  
copy to... 2/6/11  
copy to... 2/6/11  
copy to... 2/6/11



# IT CITY KARACHI.

(MASTER COPY RFP)



## BILL OF QUANTITIES FOR CONSTRUCTION WORKS OF BOUNDARY FENCE APPENDIX-D

FEBRUARY, 2011

Owner



IT DEPARTMENT  
GOVERNMENT OF SINDH



Prepared by:



On behalf of:

AAA PARTNERSHIP PVT. LTD.  
PROJECT & CONSTRUCTION MANAGEMENT



Data Communication and Control (Pvt.) Ltd.



**BOQ FOR TEMPORARY SITE OFFICE**  
**IT CITY, KARACHI**  
**FEBRUARY 14, 2011**

S. #	DESCRIPTION OF ITEM	UNIT	QTY	RATE (Rs.)	AMOUNT (Rs.)
1.13	Anti-Termite Treatment				
(a)	Providing and spraying pesticide solution of approved manufacturer inside building line in 3 - stages i.e. in trenches, on floor base & all wood work etc., using "Agenda 25 EC" by Jaffer Bros. or "Biflex" by FMC or any other approved equivalent water mixed solution @ 5 Liter/Sqm.; complete as per the directions of the Engineer incharge & Contract Provisions.	P.Sft	3,551.00		
1.14	Providing, mixing and laying lean concrete 1:9 (1 - cement, 9 - graded screened bajri 1/2" and down gauge) for sub floor laid in level/slope as required including consolidating, finishing and curing etc.; complete (including screening and washing of stone aggregate with shuttering) as per the directions of the Engineer incharge & Contract Provisions.				
(a)	(1:9) 4" thick for sub floor.	% Cft.	11.709		
1.15	Providing, mixing and laying 2" thick topping consisting of C.C. floor 1:2:4 (1 - cement, 2 - graded screened bajri, 4 - crushed stone) 3" thickness having niru finish using steel trowel laid in panels having string impression including curing, leveling, finishing etc. over sub floor laid in level/slope as required including consolidating, finishing and curing etc.; complete (including screening and washing of stone aggregate with shuttering) as per the directions of the Engineer incharge & Contract Provisions.	%Sft.	35.500		
1.16	Providing and applying 1/2" thick smooth cement plaster (internal) in plumb and line with ratio 1:5 (1 - cement, 5 - fine sand) on ceiling, walls, columns etc. in straight/curved surfaces including fixing 6" wide aluminium wire mesh over all joints and all electrical cuttings including curing, making edges and corners (all visible corners to be rounded or tapered as per instruction) scaffolding etc. Complete in all respect at any height as per drawing & as per the directions of the Engineer incharge & Contract Provisions.				
(a)	1/2" thick	%Sft.	121.740		
1.17	Providing and applying 3/4" thick cement sand base plaster (external) in plumb & line with ratio 1:4 (1 - cement, 4 - fine sand) on block wall, concrete surfaces i.e. Beams, Brackets, Slab etc. at any height having wooden trowel finish including making chamfered/sharp edges or rounding of corners at junctions, preparing scaffolding etc. Complete in all respect at any height as per drawing & as per the directions of the Engineer incharge & Contract Provisions.				
(a)	3/4" thick	%Sft.	40.240		
1.18	Providing and applying 3 coats of Distemper on walls & ceilings (ICI/Burger Paint or approved equivalent of approved shade) including applying a coat of primer, preparation of base by rubbing the surface with sand paper, filling the voids with chalk / plaster of Paris etc. complete at any height as per drawing & in all respect at any height as per drawing & as per the directions of the Engineer incharge & Contract Provisions.	%Sft.	135.830		





**BOQ FOR TEMPORARY SITE OFFICE**  
**IT CITY, KARACHI**  
**FEBRUARY 14, 2011**

S. #	DESCRIPTION OF ITEM	UNIT	QTY	RATE (Rs.)	AMOUNT (Rs.)
1.19	Providing and applying 3 coats of weather shield paint on external walls (ICI/Burger Paint or approved equivalent of approved shade) including applying a coat of primer, preparation of base by rubbing the surface with sand paper, filling the voids with chalk / plaster of Paris etc. complete at any height as per drawing & in all respect at any height as per drawing & as per the directions of the Engineer incharge & Contract Provisions.	%Sft.	40.250		
1.20	Providing and fixing precast panels of size 4'-0" x 2'-0" thickness 2" to make roof slab with precast "I" beams on roof complete including filling the joints with cement sand mortar (1:4) etc. complete as per the directions of the Engineer incharge & Contract Provisions.	Sft.	3,908.000		
1.21	Providing and fixing false ceiling of Mineral fiber board of size 2'-0" x 2'-0" of 5/8" thick of approved supplier including frame work of aluminium T section hanged with nails wire to ceiling etc. with suspension system complete as per the directions of the Engineer incharge & Contract Provisions.	P.Sft	2,184.000		
1.22	Supplying & fixing in position Aluminium channels framing for sliding windows & ventilators of Alcop made or any other approved equivalent with 5mm thick tinted glass glazing (Belgium) & Aluminium fly screen i/c handles stoppers & locking arrangement etc. complete as per the directions of the Engineer incharge & Contract Provisions.				
(a)	Natural Anodized silver colour	Sft	392.000		
1.23	Providing and fixing in position Doors of Red Maranti frame and 1 3/4" thick commercial ply 3 mm thick on both sides and architrave of 2" x 1/2" including hold fasts, hinges, iron tower bolts, handles and cleats with cord and one Mortise Lock and hooks including clear lacquer polish complete as per directions of the Engineer incharge & Contract Provisions.				
(a)	Wooden door and frame	Sft	484.000		
1.24	Supplying & fixing in position iron / steel grill of 3/4" x 1/4" size flat iron of approved design including anti-rust treatment using approved anti-rust paint and plastic painting 3 coats etc. complete (weight not to be less than 3.7 Lbs /Sq. foot of finished grill; complete as per directions of the Engineer incharge & Contract Provisions.	Sft	392.000		
1.25	Providing and laying tiles glazed 8" x 8" on floor or wall facing in required colour and pattern of STILE specification jointed in white cement and pigment over a base of 1:2 grey cement mortar 3/4" thick including washing and filling of joints with slurry of white cement and pigment in desired shape with finishing cleaning etc. complete including cutting tiles to proper profile; complete as per the directions of the Engineer incharge & Contract Provisions.	% Sft	18.700		



**BOQ FOR TEMPORARY SITE OFFICE  
IT CITY, KARACHI  
FEBRUARY 14, 2011**

S. #	DESCRIPTION OF ITEM	UNIT	QTY	RATE (Rs.)	AMOUNT (Rs.)
1.26	Providing and laying roofing treatment over flat roof consisting of laying 2" thick (average) C.C. 1:2:4 screed laid in required slope, including 1/4" dia steel on both ways, curing etc.; complete as per the directions of the Engineer incharge & Contract Provisions.	% Sft	39.07		

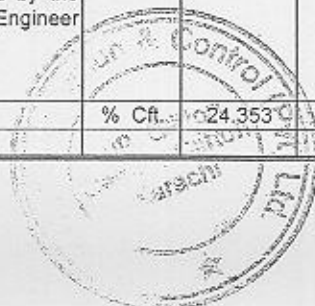






**BOQ FOR TEMPORARY SITE OFFICE  
IT CITY, KARACHI  
FEBRUARY 14, 2011**

S. #	DESCRIPTION OF ITEM	UNIT	QTY	RATE (Rs.)	AMOUNT (Rs.)
1	Construction of site offices including finishing as per requirement and instructions of the Employer & Engineer in charge as per Contract Provisions.				
1.1	Earth work for excavation undressed lead as required in all types of soil including sandy, salty, clay, moist or damp soil of any hardness & depth as shown in sketches; including shoring for foundation as per drawings and specification to all lifts and leads within the perimeter of the plot; complete as per the directions of the Engineer incharge & Contract Provisions.	%0 Cft.	6.466		
1.2	Back Filling of excavated material including watering and well ramming earth in situ enclosed perimeter; complete as per the directions of the Engineer incharge & Contract Provisions..	%0 Cft.	3.297		
1.3	Providing, mixing & laying plain cement concrete using Sulphate Resistant cement of any thickness in foundations at any depth and under floor or grade using graded screened bajri 3/8" and down gauge as fine aggregate and stone ballast 2" to 1-1/2" size as coarse aggregate of approved quality hard origin including formwork and its removal. Compacting, leveling, curing etc. complete in all respect conforming to the requirement of drawings, specification, complete as directed by the Engineer; complete as per the directions of the Engineer incharge & Contract Provisions.				
(a)	Lean of Ratio 1:4:8	% Cft.	7.320		
1.4	The dewatering shall be accomplished to provide dry working condition within designated area during and after full excavation and concreting to the required level within the designated area in a manner that will prevent seepage, boils, loss of fines, corrosion, softening of the strata, and that will maintain the stability of the bottom and slope of excavation, including all necessary piping required for dewatering upto the ultimate source of disposal as directed by the Engineer. The contractor shall dispose the water at locations as per approval of the local authorities / regulatory bodies, and obtained by the contractor. contractor to submit "method of statement" for approval prior to dewatering authority and shall continue dewatering until such time as directed by the Engineer incharge & Contract Provisions.	LS	Job		
1.5	Providing, mixing & laying plain cement concrete using Sulphate Resistant cement of any thickness in foundations at any depth and under floor or grade using graded screened bajri 3/8" and down gauge as fine aggregate and stone ballast 2" to 1-1/2" size as coarse aggregate of approved quality hard origin including formwork and its removal. Compacting, leveling, curing etc. complete in all respect conforming to the requirement of drawings, specification, complete as directed by the Engineer; complete as per the directions of the Engineer incharge & Contract Provisions.				
(a)	Situ 1:3:6 (SRC) in foundation steps	% Cft.	24.353		



**BOQ FOR SECURITY PICKETS**  
**IT CITY, KARACHI**  
**FEBRUARY 14, 2011**

S. #	DESCRIPTION OF ITEM	UNIT	QTY	RATE (Rs.)	AMOUNT (Rs.)
1	Construction of Security Pickets including finishing as per requirement and instructions of the Employer & Engineer in charge as per Contract Provisions.				
1.1	Earth work for excavation undressed lead as required in all types of soil including sandy, salty, clay, moist or damp soil of any hardness & depth as shown in sketches; including shoring for foundation as per drawings and specification to all lifts and leads within the perimeter of the plot; complete as per the directions of the Engineer incharge & Contract Provisions.	%0 Cft.	7.920		
1.2	Back Filling of excavated material including watering and well ramming earth in situ enclosed perimeter; complete as per the directions of the Engineer incharge & Contract Provisions..	%0 Cft.	4.000		
1.3	Providing, mixing & laying plain cement concrete using Sulphate Resistant cement of any thickness in foundations at any depth and under floor or grade using graded screened bajri 3/8" and down gauge as fine aggregate and stone ballast 2" to 1-1/2" size as coarse aggregate of approved quality hard origin including formwork and its removal. Compacting, leveling, curing etc. complete in all respect conforming to the requirement of drawings, specification, complete as directed by the Engineer; complete as per the directions of the Engineer incharge & Contract Provisions.				
(a)	Lean of Ratio 1:4:8	% Cft.	8.000		
1.4	Providing, mixing & laying plain cement concrete using Sulphate Resistant cement of any thickness in foundations at any depth and under floor or grade using graded screened bajri 3/8" and down gauge as fine aggregate and stone ballast 2" to 1-1/2" size as coarse aggregate of approved quality hard origin including formwork and its removal. Compacting, leveling, curing etc. complete in all respect conforming to the requirement of drawings, specification, complete as directed by the Engineer; complete as per the directions of the Engineer incharge & Contract Provisions.				
(a)	Situ 1:3:6 (SRC) in foundation steps	% Cft.	32.000		
1.5	Damp Proof Course consisting of Cement sand and shingle concrete (1:2:4) using Sulphate Resistant cement and Pudlo mixed as per the manufacturers recommendations including 2 coats of asphaltic mixture; complete as per the directions of the Engineer incharge & Contract Provisions. .				
(a)	2" thick 9" wide	% Sft.	7.200		



**BOQ FOR SECURITY PICKETS**  
**IT CITY, KARACHI**  
**FEBRUARY 14, 2011**

S. #	DESCRIPTION OF ITEM	UNIT	QTY	RATE (Rs.)	AMOUNT (Rs.)
1.6	Providing and applying water proofing 1/8" thick @ 60 lbs. / 100 sft, grade 80/100 hot applied bitumen on concrete surface as below; complete as per the directions of the Engineer incharge & Contract Provisions.				
(a)	Situ and footing	% Sft	82.40		
(b)	Roof	% Sft	32.40		
1.7	Providing and laying 1:3:6 cement concrete solid block masonry 6" thick set in 1:6 cement sand mortar above N.G.L. including raking out joints, scaffolding and curing etc. as per sketch attached; complete as per the directions of the Engineer incharge & Contract Provisions.	% Sft	71.600		
1.8	Providing & installing at site precast reinforced cement concrete lintels with cement sand mortar including steel reinforcement laying plain cement concrete using O.P cement using graded screened bajri 3/8" and down gauge as fine aggregate and stone ballast 2" to 1-1/2" size as coarse aggregate of approved quality hard origin including formwork and its removal. Compacting, leveling, curing etc. complete in all respect conforming to the requirement of drawings, specification; complete as per the directions of the Engineer incharge & Contract Provisions.				
(a)	Precast Lintels Ratio (1:2:4)	per cft	134.00		
1.9	Earth work compaction (soft, ordinary or hard soil)				
(a)	Earth filling with on site material (from site to site) and laying in 6" thick layers leveling and dressing complete below sub floor in plinth, depression and where ever required; well watered, consolidated and compacted with mechanical means; complete as per the directions of the Engineer incharge & Contract Provisions.	% Cft.	1.280		
1.10	Providing and laying stone soling to 6" thick with broken stones and filling the voids with stone metals 3/4" to 1 1/2" size and fine sand, well rammed, watered, consolidated and compacted with mechanical means, over earth filling below sub floor in plinth, depression and where ever required; complete as per the directions of the Engineer incharge & Contract Provisions.	% Sft.	25.600		
1.11	Anti-Termite Treatment				





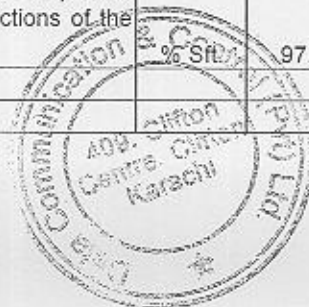
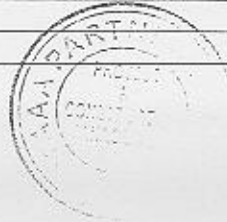
**BOQ FOR SECURITY PICKETS**  
**IT CITY, KARACHI**  
**FEBRUARY 14, 2011**

S. #	DESCRIPTION OF ITEM	UNIT	QTY	RATE (Rs.)	AMOUNT (Rs.)
(a)	Providing and spraying pesticide solution of approved manufacturer inside building line in 3 - stages i.e. in trenches, on floor base & all wood work etc., using "Agenda 25 EC" by Jaffer Bros. or "Biflex" by FMC or any other approved equivalent water mixed solution @ 5 Liter/Sqm.; complete as per the directions of the Engineer incharge & Contract Provisions.	P.Sft	2,560.00		



**BOQ FOR SECURITY PICKETS**  
**IT CITY, KARACHI**  
**FEBRUARY 14, 2011**

S. #	DESCRIPTION OF ITEM	UNIT	QTY	RATE (Rs.)	AMOUNT (Rs.)
1.12	Providing, mixing and laying lean concrete 1:9 ( 1 - cement, 9 - graded screened bajri 1/2" and down gauge) for sub floor laid in level/slope as required including consolidating, finishing and curing etc.; complete (including screening and washing of stone aggregate with shuttering) as per the directions of the Engineer incharge & Contract Provisions.				
(a)	(1:9) 4" thick for sub floor.	% Cft.	8.450		
1.13	Providing, mixing and laying 2" thick topping consisting of C.C. floor 1:2:4 (1 - cement, 2 - graded screened bajri, 4 - crushed stone) 3" thickness having niru finish using steel trowel laid in panels having string impression including curing, leveling, finishing etc. over sub floor laid in level/slope as required including consolidating, finishing and curing etc.; complete (including screening and washing of stone aggregate with shuttering) as per the directions of the Engineer incharge & Contract Provisions.				
		% Sft.	25.60		
1.14	Providing and applying 1/2" thick smooth cement plaster (internal) in plumb and line with ratio 1:5 (1 - cement, 5 - fine sand) on ceiling, walls, columns etc. in straight/curved surfaces including fixing 6" wide aluminium wire mesh over all joints and all electrical cuttings including curing, making edges and corners (all visible corners to be rounded or tapered as per instruction) scaffolding etc. Complete in all respect at any height as per drawing & as per the directions of the Engineer incharge & Contract Provisions.				
(a)	1/2" thick	% Sft.	91.600		
1.15	Providing and applying 3/4" thick cement sand base plaster (external) in plumb & line with ratio 1:4 (1 - cement, 4 - fine sand) on block wall, concrete surfaces i.e. Beams, Brackets, Slab etc. at any height having wooden trowel finish including making chamfered/sharp edges or rounding of corners at junctions, preparing scaffolding etc. Complete in all respect at any height as per drawing & as per the directions of the Engineer incharge & Contract Provisions.				
(a)	3/4" thick	% Sft.	71.600		
1.16	Providing and applying 3 coats of Distemper on walls & ceilings (ICI/Burger Paint or approved equivalent of approved shade) including applying a coat of primer, preparation of base by rubbing the surface with sand paper, filling the voids with chalk / plaster of Paris etc. complete at any height as per drawing & in all respect at any height as per drawing & as per the directions of the Engineer incharge & Contract Provisions.				
		% Sft.	97.20		



**BOQ FOR SECURITY PICKETS**  
**IT CITY, KARACHI**  
**FEBRUARY 14, 2011**

S. #	DESCRIPTION OF ITEM	UNIT	QTY	RATE (Rs.)	AMOUNT (Rs.)







**BOQ FOR SECURITY PICKETS**  
**IT CITY, KARACHI**  
**FEBRUARY 14, 2011**

S. #	DESCRIPTION OF ITEM	UNIT	QTY	RATE (Rs.)	AMOUNT (Rs.)







**BOQ FOR BOUNDARY FENCE  
IT CITY, KARACHI  
FEBRUARY 14, 2011**

S#	DESCRIPTION OF ITEM	UNIT	QTY	RATE (Rs.)	AMOUNT (Rs.)



**BOQ FOR BOUNDARY FENCE**  
**IT CITY, KARACHI**  
**FEBRUARY 14, 2011**

S#	DESCRIPTION OF ITEM	UNIT	QTY	RATE (Rs.)	AMOUNT (Rs.)
1.5	Providing and laying Reinforced cement concrete 1:2:4 (mix design) using S.R.C. with graded screened bajri 3/8" and down gauge as fine aggregate and crushed stone 3/4" and down gauge as coarse aggregate with machine mixing including the cost of form work and its removal, vibrating using mechanical vibrator, curing and cube testing etc. having min. works cube crushing strength of 3,000 psi after 28 days curing but excluding the cost of steel reinforcement bars and its labour for bending and binding which will be paid separately; complete as per drawing This rate includes of all kinds of form moulds: lifting shuttering curing rendering and finishing the exposed surface (including screening and washing of shingle) as per sketch attached. As per the directions of the Engineer incharge & Contract Provisions.				
(a)	in foundations with S.R.Cement	Per cft.	16,070.00		
	<b>R.C.C. 1: 2 : 4 Pre-cast Pre-stressed Columns</b>				
1.6	Providing, fabricating & installing at site the Pre-Cast & Pre-stressed Columns of size 0'-9" x 0'-8" by Izhar Construction or any other approved manufacturer / supplier having 3000 psi cubical strength in grey colour using O.P Cement upto 10'-6" height and 10'-0" c/c distance etc. including all accessories and allied expenses like water & electricity, complete in all respects conforming to the requirement of drawings, design and specifications also including the cost of reinforcement and its fabrication; as per the directions of the Engineer incharge & Contract Provisions.	Nos.	1,950.00		
	<b>R.C.C 1:2:4 (Above P.L.)-(Pre-cast 3" thick Panels)</b>				
1.7	Providing, fabricating & installing at site the Pre-Cast panel by Izhar Construction or any other approved manufacturer / supplier having 3000 psi cubical strength in grey colour using O.P Cement size 10'-0" x 8'-0" x 3" thick height etc. including all accessories and allied expenses like water & electricity, complete in all respects conforming to the requirement of drawings, design and specifications & also including the cost of reinforcement and its fabrication; as per the directions of the Engineer incharge & Contract Provisions.	Nos.	1,948.00		
	<b>Metal Barbed Wire Fence</b>				









**BOQ FOR MISCELLANEOUS ITEMS**

IT CITY, KARACHI

FEBRUARY 14, 2011

S#	DESCRIPTION OF ITEM	UNIT	QTY	RATE (Rs.)	AMOUNT (Rs.)
1.0	<b>GENERAL SITE CLEANING / HOUSEKEEPING:</b>				
	Carrying out general site cleaning & housekeeping on daily basis including making of garbage chutes and garbage/debris collection bins at various locations at site, collection of garbage/debris (Including those from other contractors if any) in those bins, disposal of all garbage/debris and surplus materials from site including shifting from any where to the allocated place, stockpiling, and subsequent loading and transportation to off-site designated area as far as it may be from site; complete as per the directions of the Engineer incharge & Contract Provisions.	PM	6.00		
2.0	<b>SITE SAFETY &amp; SECURITY:</b>				
	Safety & security of staff, workmen, visitors at the site and protection of site materials / works; site lighting, fencing and signage etc. and the implementation of site security & safety plans at the Site to the complete satisfaction of the Engineer In charge; as per the Contract Provisions.	PM	6.00		
3.0	<b>SITE CLEARING</b>				
	Carrying out the clearing works for boundary wall by cutting and removing all the shrubs, cutting the trees of any height and girth into portable pieces taking out their entire roots and filling the voids with suitable earth including stacking of serviceable material and useless material like debris, rubbish of all kind and size with all lifts and leads & stacking of salvage material complete; including leveling of ground using tractor or other machinery as recommended by the Engineer & Contract Provisions.	Sft	234,000.00		
4.0	<b>LANDSCAPING / SITE BEAUTIFICATION</b>				
	Providing & Carrying out the site beautification works which includes planting & grassing including making of planters of required sizes with sweet earth & manure etc. in the designated area; complete as per the directions of the Engineer incharge & Contract Provisions.	Sft	2,000.00		
5.0	<b>PAVED TILES</b>				
	Providing and laying Precast Pavers by Envicrete / Hubcrete / Izhar or any other approved manufacturer 60mm thick on walkways & around planters & garden area, laid as per Manufacturer's specifications to be laid with cement sand mortar (1:6); complete as per the directions of the Engineer incharge & Contract Provisions.	Sft	1,500.00		



**BOQ FOR MISCELLANEOUS ITEMS**  
**IT CITY, KARACHI**  
**FEBRUARY 14, 2011**

S#	DESCRIPTION OF ITEM	UNIT	QTY	RATE (Rs.)	AMOUNT (Rs.)
<b>6.0</b>	<b>M.S. MAIN GATES</b>				
	Providing, fabricating and fixing Metal gates comprising of 2" x 2" x 1/2" thick M.S. angle in Box frame for top, sides, Mid and bottom, including internal pattern having 3/4" x 3/4" square solid bars (vertically) at 4" c/c to be welded with main frame and sub-frame including enamel paint finish, complete with all necessary fixing arrangements, pivots, tower bolts, rollers and steel track etc.; complete as per the directions of the Engineer incharge & Contract Provisions.				
	size 20'-0" x 8'-0" high (double shutter roller mounted)	Nos.	2.00		
	size 4'-0" x 8'-0" high (Pedestrian Gate single shutter)	Nos.	2.00		
<b>7.0</b>	<b>UNDER GROUND WATER TANK</b>				
	Providing & making U.G.Tank including excavation, 6" thick dry brick ballast, 1:4:8 concrete, 8" thick 1:1½:3 base slab and walls, 6" thick 1:2:4 top slab using S.R.C., 5/8" diameter mild steel steps at 12" centers, cast iron cover with frame weighting ½ cwt., 4" vent pipe, water proof plaster and finish plaster etc. including the cost of reinforcement steel; complete as per the directions of the Engineer incharge & Contract Provisions.				
		Gal.	5,000.00		
<b>8.0</b>	<b>OVER HEAD WATER TANK</b>				
	Providing & installing at site Over Head Water Storage Tank of capacity of 1,000 gallons made up of Fiber Glass from Master / Fiber Tech or other approved equivalent; complete with as per the directions of the Engineer incharge & Contract Provisions.				
(a)	For Site office	No.	1.00		
<b>9.0</b>	<b>ELECTRIC PUMP ONE .H.P.</b>				
	Providing, installing & commissioning at site Electric pump of one H.P. including all accessories from approved supplier; complete as per the directions of the Engineer incharge & Contract Provisions.				
(a)	For Site office and one standby	No.	2.00		
<b>10.0</b>	<b>BORE WELL FOR WATER SUPPLY</b>				
	Arranging & making provision for the uninterrupted supply of water from the source / bore well for construction and drinking purposes of all labour / staff at site including that of sub-contractors, appointed by the Contractor and those appointed by the Employer (if any) sufficient for two years from the date of commencement of work till Substantial Completion; complete as per the directions of the Engineer incharge & Contract Provisions.				
(a)	Bore Well	No.	1.00		







**BOQ FOR MISCELLANEOUS ITEMS**  
**IT CITY, KARACHI**  
**FEBRUARY 14, 2011**

S#	DESCRIPTION OF ITEM	UNIT	QTY	RATE (Rs.)	AMOUNT (Rs.)



**BOQ FOR ELECTRICAL WORKS**  
**IT CITY, KARACHI**  
**FEBRUARY 14, 2011**

S. #	DESCRIPTION OF ITEM	UNIT	QTY	RATE (Rs.)	AMOUNT (Rs.)
1	<b>Conducting and Wiring</b>				
a)	Wiring and conducting from DB to switch with 2 x 2.5 sq.mm 1 core PVC insulated cable + CPC 2.5 sq.mm 1 core PVC insulated cable in 25 mm dia PVC conduit, complete with cables and conduits and all necessary accessories such as sheet steel back box with earth connecting point, etc., as per the specifications and drawings and approval by the Engineer.	Nos	70		
b)	Same as item 1(a) but wiring from switch to switch / dimmer.	Nos	20		
c)	Same as item 1(a) but wiring from switch / dimmer to first light point / Fan point with 2 x 2.5 sq.mm 1 core PVC insulated cable + CPC 2.5 sq.mm 1 core PVC insulated cable in 25 mm dia PVC conduit, complete with cables and conduits and all necessary accessories as per the specifications and drawings and approval by the Engineer.	Nos	25		
d)	Same as item 1(a) but wiring from light point to light point	Nos	15		
e)	Wiring and conducting from DB to 15A / 13A / 10A power socket outlet with 2 x 4 sq.mm 1 core PVC insulated cable + CPC 4 sq.mm 1 core PVC insulated cable in 25 mm dia PVC conduit complete with cables, conduits and all necessary accessories such as bends, junction boxes, sockets etc., as per the specifications and drawings and approval by the Engineer.	Nos	15		
f)	Same as item 3(a) but wiring between adjacent socket outlets with 2 x 2.5 sq.mm 1 core PVC insulated cable + CPC 2.5 sq.mm 1 core PVC.	Nos	15		
g)	Same as 3(a) but wiring from socket outlet to socket outlet with 2 x 2.5 sq.mm 1 core PVC insulated cable + CPC 2.5 sq.mm 1 core PVC.	Nos	15		
2	<b>Switches, Sockets &amp; Accessories</b>				
a)	Supply and installation of following sizes of gang switch of 10 Amp rating, recessed in already laid 16 SWG sheet steel back box (with earth terminal and 2 coats of antirust paint), complete in all respect, as per specifications and drawings and approval by the Engineer.				
i)	One gang - 1 Way Switch	Nos	8		
ii)	Two gang - 1 Way Switch	Nos	2		
iii)	Three gang - 1 Way Switch	Nos	4		
iv)	Four gang - 1 Way Switch	Nos	5		
v)	Fan Dimmer - 1 Gang	Nos	18		
vi)	10 AMP Bell Press switch Electric bell	Nos	1		
b)	Supply, installation, testing & commissioning of following type socket outlet recessed in wall in 16 SWG sheet steel box of top quality (with earth terminal and 2 coats of antirust paint), complete in all respects, as per specifications and drawings and approval by the Engineer.				
i)	2 Pin 10A with Earth terminal universal switch socket outlet	Nos	20		





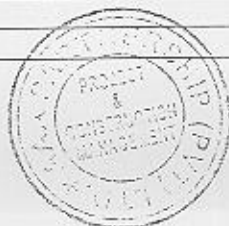
**BOQ FOR ELECTRICAL WORKS**  
**IT CITY, KARACHI**  
**FEBRUARY 14, 2011**

S. #	DESCRIPTION OF ITEM	UNIT	QTY	RATE (Rs.)	AMOUNT (Rs.)
ii)	3 Pin 13A Duplex switch socket outlet	Nos	12		
iii)	3 Pin 15A switch socket outlet with Neon	Nos	21		



**BOQ FOR ELECTRICAL WORKS**  
**IT CITY, KARACHI**  
**FEBRUARY 14, 2011**

S. #	DESCRIPTION OF ITEM	UNIT	QTY	RATE (Rs.)	AMOUNT (Rs.)
c)	Supply and installation of Electric bell with all installation accessories complete in all respect as drawing and to the approval of the Engineer.	Nos	1		
d)	Supply and installation of conduits of following sizes, including all conduit accessories such as junction boxes, sockets, bends etc, for any system and requirement etc., complete in all respect and to the approval of the Engineer.				
i)	25 mm dia PVC conduit	Rft	1,000		
ii)	32 mm dia PVC conduit	Rft	500		
iii)	38 mm dia PVC conduit class 'D'	Rft			
e)	Supply and installation of RCC pipe of following sizes, including all accessories, excavation works, back filling etc complete in all respect as per drawing and to the approval of the Engineer.				
i)	150 mm dia RCC pipe	Rft	2		
<b>3</b>	<b>Light Fixtures &amp; Fans</b>				
a)	Supply and installation of the following types of light fixtures equipped with lamps and other necessary hardware like holders, ballasts, starters, capacitors and transformers (wherever required) and installation accessories such as screws, Hilti drop-i etc. complete in all respect as per the specifications and drawings and to the approval by Engineer.				
i)	Philips TMS or equivalent with 1x 28W TL5 fluorescent Lamps color 84	Nos	77		
ii)	Philips make or equivalent surface mounted ceiling light flat type 1x18 watt energy saver lamp with glass cover (To be approved by Architect)	Nos	14		
iii)	Philips make or equivalent non-standard wall mounted fancy light fixture with 2 x 18 watt energy saver lamp (To be approved by Architect)	Nos	1		
iv)	Philips make or equivalent wall mounted light fixture suitable for outdoor application with 1x 18 watt energy saver lamp (To be approved by Architect)	Nos	9		
b)	Supply and installation of the following types of Fans with all necessary hardware like Fan hook, bracket etc., complete in all respects, as per the specifications and drawings and approval by the Engineer				
i)	8" dia Exhaust Fan	Nos	10		
ii)	56 inch dia Ceiling Fan	Nos	18		
<b>4</b>	<b>Distribution Board</b>				
a)	Supply, installation, testing and commissioning of the following Distribution Board items, complete with all mounting accessories and hardware, as per the drawings and specifications and approval by the Engineer	Nos	2		
<b>5</b>	<b>Generators &amp; Accessories with Canopy</b>				
i)	5 KVA	Nos			
ii)	10 KVA ( Solar System)	Nos			
iii)	19 KVA	Nos			



**BOQ FOR ELECTRICAL WORKS**  
**IT CITY, KARACHI**  
**FEBRUARY 14, 2011**

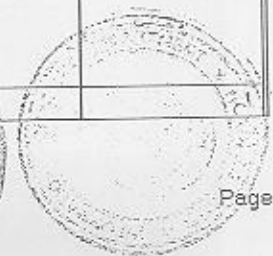
S. #	DESCRIPTION OF ITEM	UNIT	QTY	RATE (Rs.)	AMOUNT (Rs.)
	<b>TOTAL OF ELECTRICAL WORKS</b>			Rs.	





**BOQ FOR PLUMBING WORKS**  
**IT CITY, KARACHI**  
**FEBRUARY 09, 2011**

S. #	DESCRIPTION OF ITEM	UNIT	QTY	RATE (Rs.)	AMOUNT (Rs.)
1	<b>Sanitary Fittings</b>				
	Providing & fixing squatting type white glazed earthen ware w.c. pan with front flush inlet & complete with including the cost of flushing cistern with internal fittings and flush Pipe with bend and making requisiter number of holes in wall plinth and floor for pipe connection and making good in cement concrete 1:2:4 ( foreign equivalent)				
a)	W.C. Pan 23" and low level earthen ware flush tank 3 gallons.	Each	8		
1.1	Providing and fixing 24"x18" lavatory basin in white glazed earthen ware complete with & i/c the cost of W.I. or C.I. antilever brackets 6 inch. Built into wall. Painted white in two coat after a primary coat of red lead paint a pair of 1/2" dia chrome plated brass chain 1-1/4" dia malleable iron or cp brass traps malleable iron or brass union & making requisite number of holes in walls plinth & floor for pipe connection and making good in cement concrete 1:2:4 ( standard pattern).	Each	2		
1.2	Providing and fixing steel stainless local mak complete with cast iron or wrought iron brackets 6 inches built in wall, 1-1/2" rubber plug chrome brass chain 1-1/2" C.P brass waste with 1-1/2" plate PVC waste pipe and making requisite umber of holes in walls & plinth and float for pipe connection and making good in cement concrete 1:2:4.				
a)	Steel sink stainless sized 40"x20" local making (standard pattern)	Each	2		
1.3	Providing & fixing 6" x 2" or 6"x3" C.I. Floor Trap of the approved self cleaning design with a C.I. screwed down gritting with or without a vent arm complete with and i/c making requisite number or holes in walls plinth and floor for pipe connections & making good in CC 1:2:4.	Each	16		
2	<b>Toilets</b>				
a)	Providing & fixing 15" x 12" beveled edge mirror of belgium glass complete with 1/8" thick hard board and c.p screws fixed to wooden plate.				
i)	Standard Pattern	Each	11		
3	<b>Cast Iron Soil, Water &amp; Vent Pipe Fittings</b>				
a)	Providing and fixing 4" dia C.I soil & vent pipes including cutting and fitting and extra painting to match the colour of building.	Rft	100		
b)	Providing and constructing block masonry manhole size 2' x 2' internal with cast iron cover and frame including 1/2" thick plaster and benching complete in all respect.				



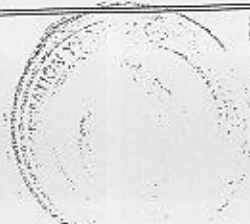
**BOQ FOR PLUMBING WORKS**  
**IT CITY, KARACHI**  
**FEBRUARY 09, 2011**

S. #	DESCRIPTION OF ITEM	UNIT	QTY	RATE (Rs.)	AMOUNT (Rs.)



**BOQ FOR PLUMBING WORKS**  
**IT CITY, KARACHI**  
**FEBRUARY 09, 2011**

S. #	DESCRIPTION OF ITEM	UNIT	QTY	RATE (Rs.)	AMOUNT (Rs.)
4	<b>Water Services (Internal)</b>				
a)	Providing G.I. Pipes specials & clamps etc including fixing cutting and fitting complete with and i/c the cost of breaking through walls and roof making good etc painting two coats after cleaning the pipe etc. with white zink paint with pigment to mch the colour of the building and testing with water to a pressure head of 200 feet and handling.				
i)	1/2" dia G.I Pipe	Rft	200		
ii)	3/4" dia G.I Pipe	Rft	150		
iii)	1" dia G.I Pipe	Rft	100		
iv)	2" dia G.I Pipe	Rft	80		
b)	Geysar - local make best quality of 30 gallons capacity.	Nos	2		
c)	CP Mixer for bath shower with flexible hose valve nozzle angle valve spout.(Local make)	Nos	5		
d)	CP Mixer for Kitchen sink, complete with accessories (Local make).	Nos	2		
e)	CP Mixer for Washbasin, complete with accessories (Local make).	Nos	5		
f)	Bronze Gate valves, and Check valves, Kitz make or approved equal including all accessories and material as specified complete as per drawings and specifications.				
i)	3/4" dia (Light pattern)	Each	7		
ii)	1" dia (Light pattern)	Each	2		
iii)	2" dia (Light pattern)	Each	2		
g)	Supplying & Fixing Bath room accessories set (7 piece) i/c towel rod, brush holder. Soap tray, shelf of approved design i/c cost of screws, nuts etc. complete (Master Brand)	Each	7		
5	<b>Gully Traps</b>				
a)	Providing & fixing 6" X 4" CC. gully trap with 4" outlet complete with 4" thick 1:2:4 CC for bed & 1/2 thick cement plaster (1:3) to the karb. C.I Grating 6"x6" & C.I. cover and frame 12" x 12" (inside) etc complete.				
i)	With C.I. Cover & frame	Each	6		
ii)	With RCC Cover	Each	6		
<b>TOTAL OF PLUMBING WORKS</b>					Rs.







Tender Evaluation Report

Project : IT City Phase-1 Construction of Boundry Fence and Master Planning  
Tender : For the Construction of Boundary Fence for IT City

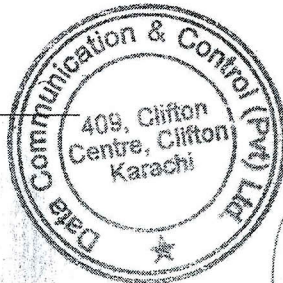
April 28, 2011

SOTI/ITD/3-5/2009  
Information Technology Department  
Government of Sindh, Karachi  
Dated: April 28 2011

Note: This report has been prepared in the light of Tender Evaluation Summary submitted by M/S Data Communication Control (Pvt) Ltd and M/S AAA Partnership Pvt Ltd as a Civil Consultant of this project, summary submitted by M/S AAA is annexed.

S.No	Bidder Name	Technical Qualification	Financial Bids in million	Bid Security Required / Earnest Money 2.5 %	Bid Security Submitted By Bidder	Ranking Position	
1	M/s. Nawab Brothers M/s. Crescent Construction Syndicate (Pvt.) Ltd	Qualified	39.992036	0.999801	1.050000	1st Ranking	Lowest Bidder as per the Financial Bid and Technically qualified, obtained more than 70% marks as per the eligibility criteria mentioned in the RFP
2	M/s. Friends Construction Co. (Pvt.) Ltd	Qualified	57.795617	1.444890	2.000000	2nd Ranking	3rd Lowest Bidder as per the Financial Bid and Technically qualified, obtained more than 70% marks as per the eligibility criteria mentioned in the RFP
3	M/s. Aaqib Builders (Pvt.) Ltd	Qualified	99.240818	2.481020	2.500000	3rd Ranking	4th Lowest Bidder as per the Financial Bid and Technically qualified, obtained more than 70% marks as per the eligibility criteria mentioned in the RFP
4	Al-Nasir Contracting Company (Pvt.) Ltd	Disqualified	x	x	x	x	2nd Lowest Bidder as per the Financial Bid but disqualified due to the submission of bid security less than the required amount. Technically qualified, obtained more than 70% marks as per the eligibility criteria mentioned in the RFP.
5	*Exceed (Pvt.) Ltd	Disqualified	x	x	x	x	Disqualified because the bidder could not provide required documents with their bids as per the qualification criteria mentioned in the Tender Document
6	Sahara Tamiraat	Disqualified	x	x	x	x	Disqualified because the bidder could not provide required documents with their bids as per the qualification criteria mentioned in the Tender Document
7							The bidder was obtained the passing marks as per qualification criteria but has invalid PEC Certificate

*Samir A. Hoodbhoy*  
(Mr. Samir Hoodbhoy)  
Managing Director  
Data Communication & Control Pvt Ltd (PM Consultant)



*(Signature)*  
(Mr. Mansoor Mirza)  
Civil Eng. (Technical Member)  
Pakistan Engineering Council

*(Signature)*  
CONTRACT OFFICER  
CONTACT MANAGEMENT  
(M/S) C.D.S.K.  
DO Contract Management (Technical Member)  
C.D.S.K. Government Karachi

*(Signature)*  
Muhammad Aslam (SO Dev-IV)  
Finance Department  
Government of Sindh  
Karachi

*(Signature)*  
PROJECT DIRECTOR  
HMIS  
Information Technology Department  
Government of Sindh

*(Signature)*  
PROJECT DIRECTOR  
HMIS  
Information Technology Department  
Government of Sindh

*(Signature)*  
Hardware Engineer  
Information Technology Department  
Government of Sindh

**ATHAR HUSSAIN BALUCH**  
Hardware Engineer  
Information Technology Department  
Government of Sindh

*(Signature)*  
Deputy Secretary (Admin)  
Information Technology Department  
Government of Sindh

*(Signature)*  
Deputy Secretary (Tech)  
Information Technology Department  
Government of Sindh

*(Signature)*  
Deputy Secretary (Tech)  
Information Technology Department  
Government of Sindh

*(Signature)*  
ADDITIONAL SECRETARY (I.T)  
Information Technology Department  
Government of Sindh

*(Signature)*  
Director General/CG IT City  
Information Technology Department  
Government of Sindh

*(Signature)*  
DIRECTOR GENERAL  
I.T. City Phase 1  
Information Technology Department  
Government of Sindh

*(Signature)*  
Deputy Secretary  
Information Technology Department  
Government of Sindh