



**USAID**  
FROM THE AMERICAN PEOPLE



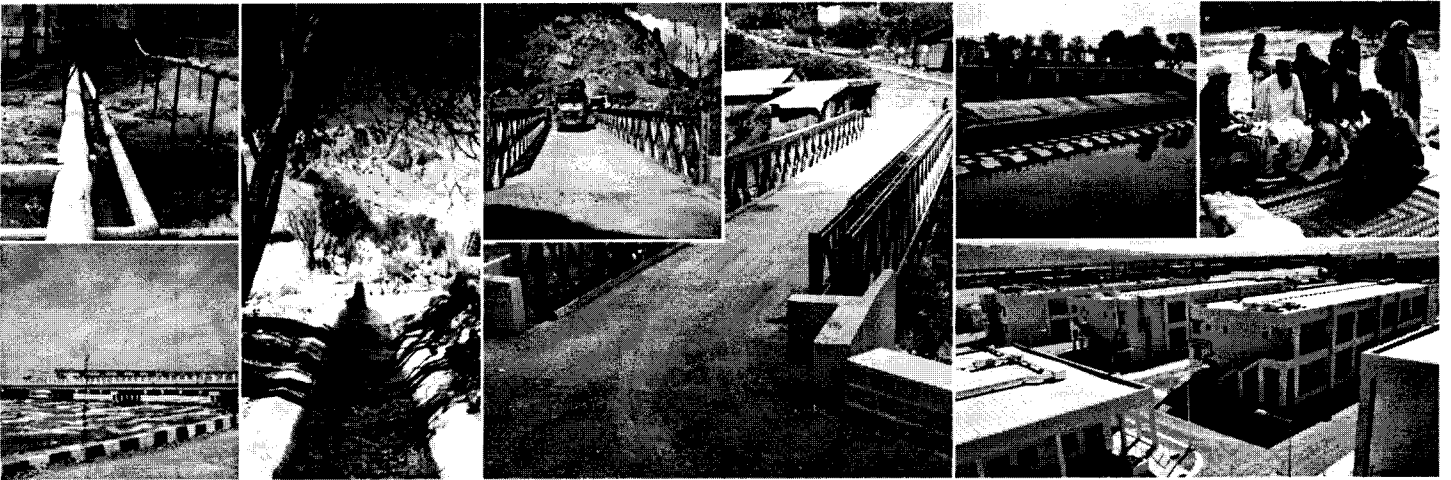
**GOVERNMENT OF SINDH, EDUCATION & LITERACY DEPARTMENT**

**Project Management & Implementation Unit (PMIU)**

**SINDH BASIC EDUCATION PROGRAM**

Construction of Seven (07) Schools in District Qambar-Shahdadkot, Sindh

(Taluka Naseerabad & Warah)



**PACKAGE NO: SBEP-P10-QSK-I**

**Tender & Contract Documents**

**ADDENDUM-1**

**Minutes of Pre-Bid Meeting**

**November 2015**

---

***Halcrow***

**PART – 1 : QUERIES AND REPLIES**

- The following answers to the questions raised by the bidders shall be considered to be Additional Clarifications/ an Addendum to the Tender Documents of the subject Package, and shall form a part of the contract documents.
- The Evaluation Criteria as given in Tender Documents (Volume-I, Annexure-A to Bidding Data) shall only govern for technical evaluation purpose.

S. No.	Activity/Agenda	Remarks/Notes
<b>A. Contractual</b>		
A. 1	In some schools, existing school building is in dangerous condition & is damaged. The students have already been shifted to some other place/ govt. school and shifting of school is not required. For those schools, is it necessary to quote rates for providing temporary academic facility?	Respective BoQ items will be paid if and when required for any school site as per requirements.
A. 2	Is the works under SBEP are exempted from Sales Tax? The SROs issued by the Sindh Govt. regarding exemption are not clear (i.e. Only Civil Works are being considered as construction works and Works related to HVAC, Electrical etc. are not being considered as civil works)	All the bidders should include all taxes, duties, levies etc. while preparation of the bid and the deductions of such taxes shall be made as per relevant rules of the Government of Sindh. For further details bidders may seek clarification before quotation of rates in bid from the concerned Tax Departments of Government of Sindh. PMIU will also facilitate where it is possible to seek clarification from SBR.  The contractor shall submit original invoices of sales tax to PMIU along with all bills and PMIU may get reimbursement from relevant tax department for the taxes which are exempted for the project.
A. 3	Whether the insurance guarantees issued by AA rated insurance companies for Bid Security & Performance Security shall be accepted?	Guarantees are required to be provided in the form of Bank guarantees as per SPRRA Rules hence can't be changed.  The Bank Guarantees or any other instrument like Pay Order, Call Deposit or Demand Draft submitted by Bidders as Bid Security or Performance Security shall also be sent to issuing Banks for verification.
A. 4	What shall be the minimum amount of running bills / IPCs?	Please refer Appendix-A to Bid (Volume-I) where it is mentioned that the minimum amount of first two IPCs is 05 Million and for the rest of IPCs is 15 Million.

<b>B. Technical</b>		
B-1	There is an item of shifting of material in the category of "General Items"; what type of material need to be shifted?	Shifting of available furniture of respective school sites including fixtures are covered under the scope of BoQ item.
B-2	What configuration of Porta-Cabins is required (if this item is being adopted)?	The covered area required for Temporary School Facility (given in BoQ item description) is estimated in accordance with the strength of students in each school and the Bidder need to quote his rates as per covered area requirement. However; configuration may be discussed as per site requirements and with the consent of school administration/SMC at execution time.
B-3	Approved brands of tiles has variable rates. Please provide a base rate for common brands for bidding purpose.	Please refer list of approved sources of materials given at the end of Volume-II and the Bidder has to select the brand which meets the Specifications e.g. he may select Porcelanto or BENITAZ (Malaysian) non-skid tile as per sizes stated in BoQ & as per specifications. However, samples shall be required to get approved from the Engineer before execution.
B-4	For Backfilling, free haulage limit is mentioned in the description of relevant BOQ item which should be fixed or its range may be given.	Contractor should visit the site and make assessment for the availability of suitable backfill material for each site.
B-5	As per drawings CC Jail from manufacturer: "Victor" is recommended, please give details of supplier.	The name of victor shall be considered removed.
B-6	Furniture Layout/ Placement Drawings are also given in Tender Drawings but relevant BOQ items are missing for providing furniture etc.	The procurement of furniture is being made through separate Tender & is out of scope for current Tender.
B-7	For Aluminum, two vendors i.e. "Lucky" & "Pakistan Cable" are mentioned in list of approved sources of materials but the Quality of Product and Rates of both vendors are quite different and are not of equal standard. Hence, for bidding purpose, whose rates should be quoted?	Both manufacturers are acceptable but Contractor has to select the brand meeting the requirements of Specifications as per their convenience.
B-8	What will be ratio of RC Concrete?	Concrete mix design will be prepared as per specification, wherein ratios will be determined on lab/field tests basis accordingly.
B-9	In item # 02C 35 MS folding gate, we couldn't find the drawings of these gates. Could please provide the drawings of these gates?	Please refer Drawing No: SBEP-SUPP-AR-1022 attached herewith as Annexure-A. Also refer Section-C-13 "Miscellaneous Metal Works" in Volume-III-B (Specifications-Technical Provisions).

**Construction of Seven (07) Schools in District Qambar-Shahdadkot (Taluka Naseerabad & Warah)**

B-10	In items for Tiles & Marble works there is no thickness of mortar provided?	Please refer Volume-IV Drawing No. AR-002 and Section: C-07 "Floor Finishes" in Volume-III-B (Specifications-Technical Provisions). Thicknesses are also mentioned in descriptions of relevant BoQ items for marble/tile works.
B-11	In item # 02C-78 of Water proofing, there is no drawings provided in bidding drawings set?	Please refer heading: "Parapet & Water Proofing" in Drawing No. AR-002 (Volume-IV) and Section-C-16 Specifications-Technical Provisions.
B-12	In item # 03D24-A PCC flooring, the thickness of floor is not mentioned?	Please refer Volume-IV Drawing No. AR-006 for details of thicknesses.
B-13	Is BOQ require to be hand fill or typed?	Both options are ok but it should be signed and stamped
B-14	Is unit rates also require to be fill in Words also, as there are more than 8000 line items which need to convert in words?	Preferred option in order to avoid ambiguities.

**PART-2: BID SUBMISSION**

- ❖ The consultant presented the detailed briefing on key aspects of SBEP and documentation requirements for Bid Submission. The representatives of Consultant explained in detail, the steps of Bid Evaluation Procedure (i.e. adopting of Post-Qualification method as per SPPRA Rules 2010).
- ❖ The consultant advised the Bidders to submit all the required data/information in accordance with Instruction to Bidders clause: IB-11 & Evaluation Criteria given in Tender Documents along with documentary evidence so that their bid may not be considered as non-responsive & rejected in preliminary evaluation.
- ❖ The consultant also advised all the bidders to carefully study the tender documents especially Quality Assurance requirements, Health & Safety and Environment protection requirements as they have to comply with QA/QC & HSE requirements till the completion of works, so they should incorporate these requirements in their quoted Bid Prices. The list of minimum HSE requirements for one school has already been highlighted on Page No. 22, Volume-III-A Specifications, and Special Provisions of Tender Documents.

----- ALL OTHER TERMS & CONDITIONS REMAIN UNCHANGED -----

*Tameer Koto*

**ANNEXURE-A**

**GENERAL NOTES**

1. This drawing must be read in conjunction with the specification and other drawings.
2. Do not scale the drawing.
3. All MS solid bars and tube shall be of minimum grade 36.
4. All solid bars shall be square.
5. All tube shall be square with minimum 14 gauge.
6. All floor MS surfaces shall be powder coated approved.
7. All hinges shall be stainless steel or as approved.
8. All hardware shall be of good quality or as approved.
9. All joints must be properly welded unless noted otherwise.

REFERENCE CONSTRUCTION DRAWINGS:  
1 - / / / (REV) 10

APPLICABLE BRACING TYPE  
RANGE DIA. 14 AND 12 CLASSROOMS



**SUPPLEMENTARY ISSUE**

NO.	DATE	DESCRIPTION
B	24	ISSUE FOR CONSTRUCTION
A	24	ISSUE FOR CONSTRUCTION
A	24	ISSUE FOR CONSTRUCTION

FINANCING AUTHORITY: **USAID**

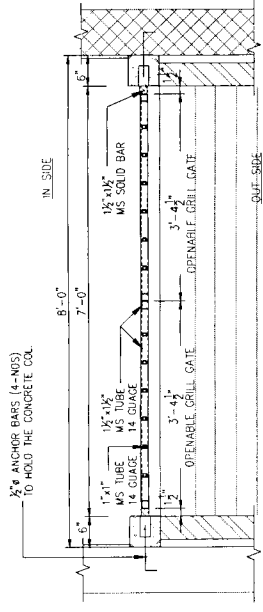
CLIENT: **PROJECT MANAGEMENT & IMPLEMENTATION UNIT (PMIU), EDUCATION & LITERACY DEPARTMENT, GOVERNMENT OF SINDH**

ENGINEER: **Halcrow**

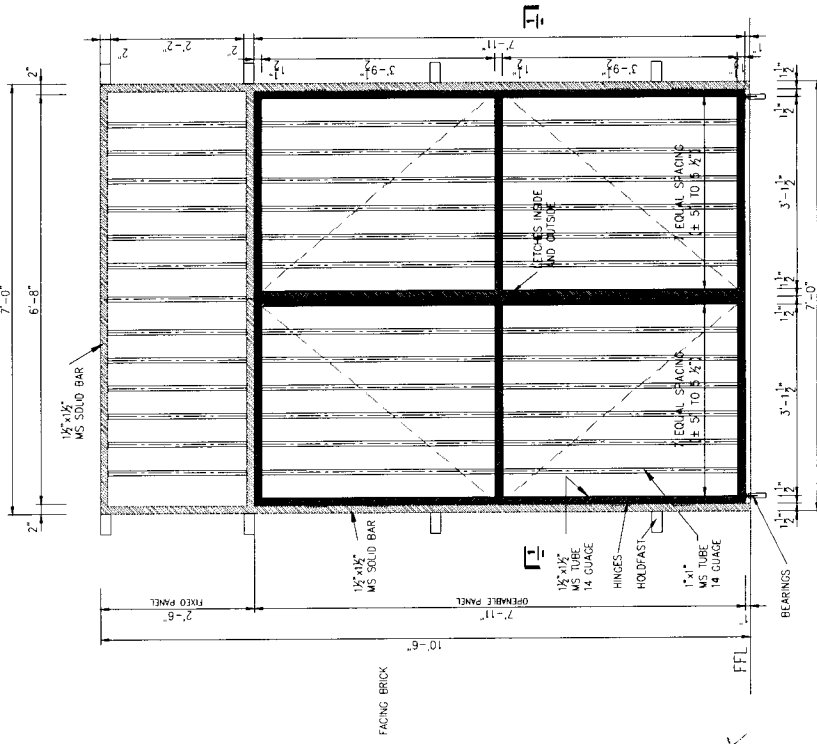
PROJECT: **ACE SERVICES FOR SINDH BASIC EDUCATION PROGRAM**

DRAWING: **SUPPLEMENTARY DETAILS FOR EMERGENCY DOOR**

Checked by: [Signature] Date: 2015  
 Authorized by: [Signature] Date: 2015  
 Revision: **B**



SECTION 1-1  
SCALE 1"=1'-0"



ELEVATION  
SCALE 1"=1'-0"

MS TUBE ARCHITECTURAL COROGATION AT UNIFORM INTERVAL ALONG LENGTH